

product specifications for:

# CLS Series 16 Inline Cams

**Item #: CLS2FB**

**Description**

FEMALE CLS SERIES 16 INLINE #6 - #2 AWG

**Electrical Specifications**

Max. Amperage: 190A with #2 AWG  
 Max. Voltage: 600V AC/DC

**Material Specifications**

Housing Material: Santoprene TPV  
 Contact Material: Brass  
 Temperature Rating: -40°C to 105°C

**Mechanical Specification**

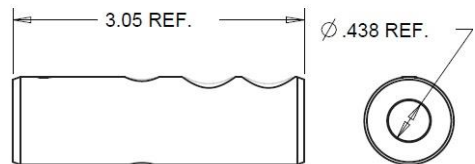
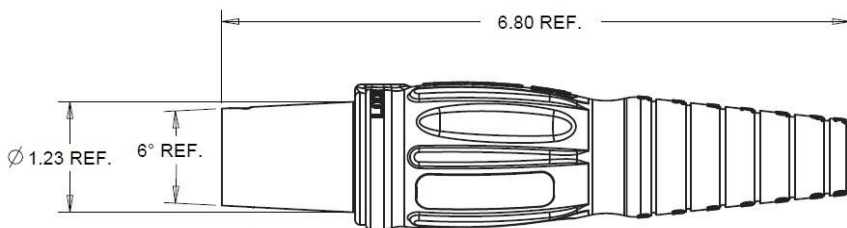
Gender: Female  
 Connection Type: Double Set Screw  
 (Torque to 160 in-lbs.)  
 Retaining Screw: Glass Filled / Heat Stabilized Nylon

Example: CLS2MB + **A** = CLS2MB-A

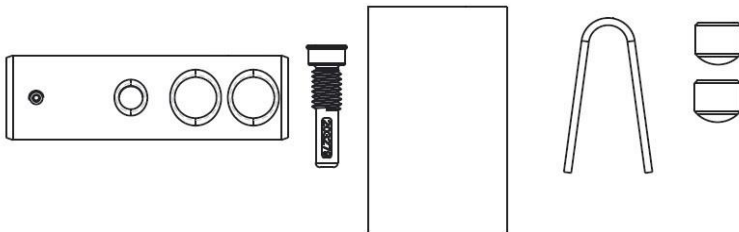


**Standards and Certifications**

UL Listed: File E471676  
 CSA Certified: 081290000  
 Environmental Rating: Type 3R & 4



SHOWN FOR SIZING



product specifications for:  
**CLS Series 16 Inline Cams**

**Item #: CLS2MB**

**Description**

MALE CLS SERIES 16 INLINE #6 - #2 AWG

**Electrical Specifications**

Max. Amperage: 190A with #2 AWG

Max. Voltage: 600V AC/DC

**Material Specifications**

Housing Material: Santoprene TPV

Contact Material: Brass

Temperature Rating: -40°C to 105°C

**Mechanical Specification**

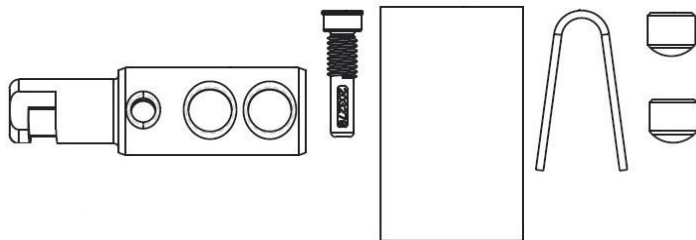
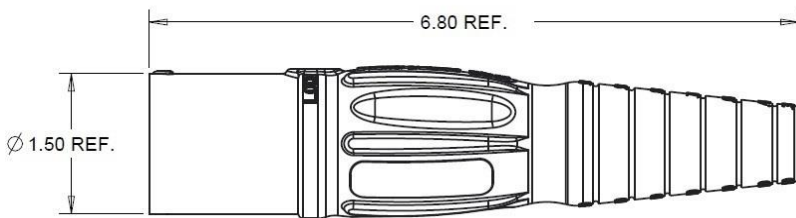
Gender: Male

Connection Type: Double Set Screw

(Torque to 160 in-lbs.)

Retaining Screw: Glass Filled / Heat Stabilized Nylon

Example: CLS2MB + **A** = CLS2MB-A

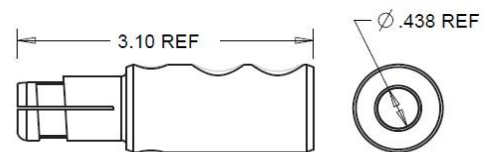


**Standards and Certifications**

UL Listed: File E471676

CSA Certified: 0812900000

Environmental Rating: Type 3R & 4



SHOWN FOR SIZING