

product specifications for:

CLS Series 16 Inline Cams

Item #: CLS20MB

Description

MALE CLS SERIES 16 INLINE #2 - 2/0 AWG

Electrical Specifications

Max. Amperage: 300A with 2/0 AWG
 Max. Voltage: 600V AC/DC

Material Specifications

Housing Material: Santoprene TPV
 Contact Material: Brass
 Temperature Rating: -40°C to 105°C

Mechanical Specification

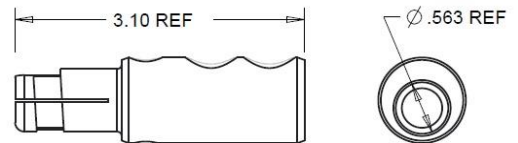
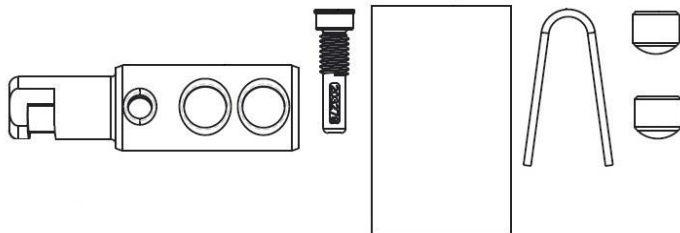
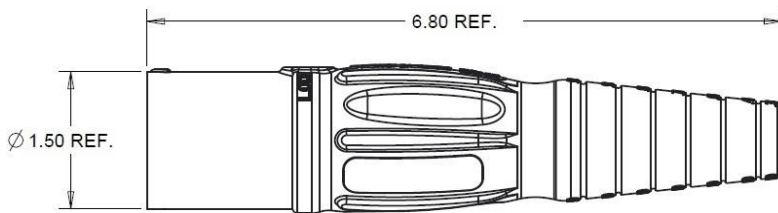
Gender: Male
 Connection Type: Double Set Screw
 (Torque to 160 in-lbs.)
 Retaining Screw: Glass Filled / Heat Stabilized Nylon

Example: CLS20MB + **A** = CLS20MB-A



Standards and Certifications

UL Listed: File E471676
 CSA Certified: 0812900000
 Environmental Rating: Type 3R & 4



SHOWN FOR SIZING



product specifications for: CLS Series 16 Inline Cams

Item #: CLS20FB

Description

FEMALE CLS SERIES 16 INLINE #2 - 2/0 AWG

Electrical Specifications

Max. Amperage: 300A with 2/0 AWG
Max. Voltage: 600V AC/DC

Material Specifications

Housing Material: Santoprene TPV
Contact Material: Brass
Temperature Rating: -40°C to 105°C

Mechanical Specification

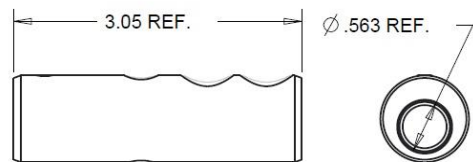
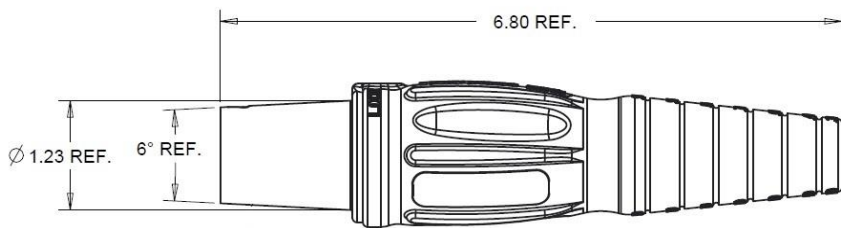
Gender: Female
Connection Type: Double Set Screw
(Torque to 160 in-lbs.)
Retaining Screw: Glass Filled / Heat Stabilized Nylon

Example: CLS20FB + **A** = CLS20FB-A



Standards and Certifications

UL Listed: File E471676
CSA Certified: 0812900000
Environmental Rating: Type 3R & 4



SHOWN FOR SIZING

