

CL & CLS Panel Mounts
400A 600V AC/DC ratings



CLM & CLSM Mini Panel Mounts
150A 600V AC/DC ratings

CAM Panel Mounts

Marinco Power Products offers a panel mounted CAM solution to go with our Series 16 and 15 (Mini) inline CAM offering. All of our panel mounted CAMs provide Nema 3R and 4 protection when mated with our series 16 and 15 (Mini) inline CAMs. Series 16 and 15 (Mini) panel mounted CAMS are UL listed and CSA certified and can be used with optional CAM covers to meet NEMA 3R environmental protection when not in use.

We offer Santoprene and Nylon versions in double set screw, bus bar and threaded stud configurations. Santoprene panel mount male and female come with brass threaded inserts with an option for drilled holes to accept #10-32 nuts and bolts. Nylon panel mount male and female come with self-threading screws with an option for drilled holes to accept #10-32 nuts and bolts.



Santoprene & super tough Nylon option

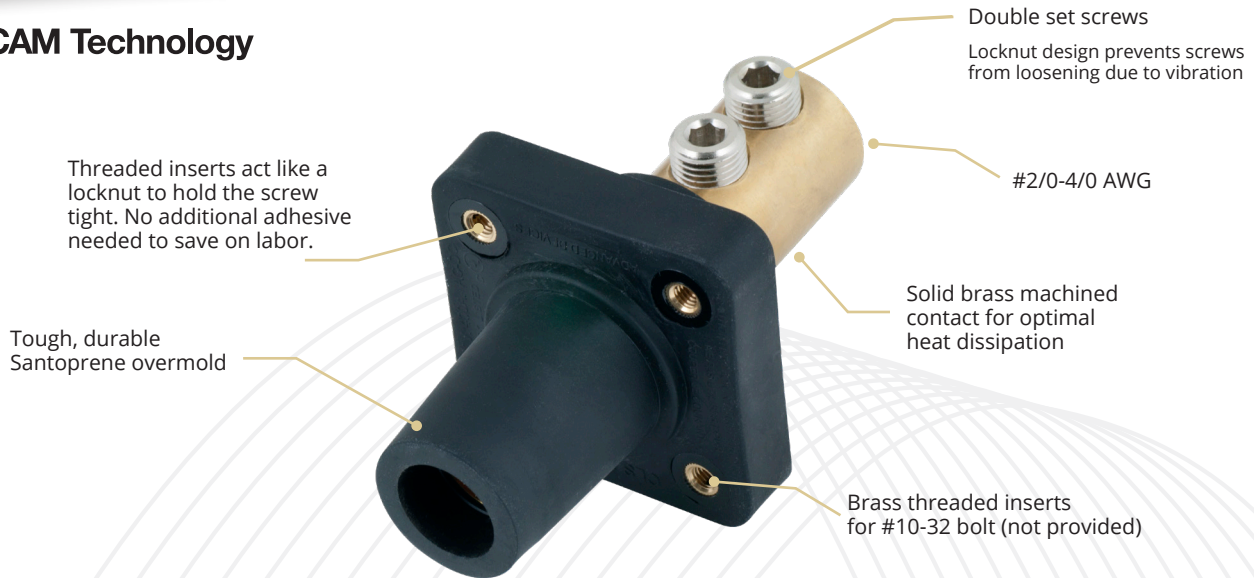
Brass threaded inserts for #10-32 bolt (not provided)

Double set screw, bus bar and threaded stud configurations

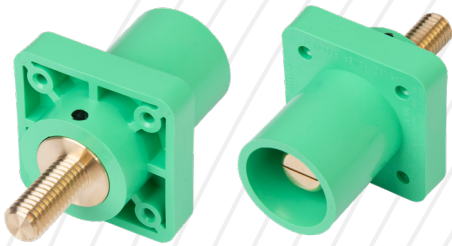
Comes in all colors



400A 600V Panel Mounts (CL & CLS)



Note: Panel mounts, mounting holes, and wiring connections are fully interchangeable with all competitive parts.



CL Panel Mounts

- Super Tough Nylon
- 400A 600V
- Comes with qty (4) of #8 Plastite Self Threading Screw for Mounting Flange
- Optional drilled out version (X) for #10-32 nut and bolt

| Wire Connection | M/F | Part # |
|------------------------------------|--------|-------------|
| #2-2/0 AWG double set screw | Male | CL20MRB |
| | Female | CL20FRB |
| 2/0-4/0 AWG double set screw | Male | CL40MRB |
| | Female | CL40FRB |
| One hole bus bar 5/16" - 18 thread | Male | CL40MRB-BB* |
| | Female | CL40FRB-BB* |
| 1-1/8" threaded stud | Male | CL40MRSB |
| | Female | CL40FRSB |
| 2" threaded stud | Male | CL40MRSB2 |
| | Female | CL40FRSB2 |

*brass threaded insert



CLS Panel Mounts

- Santoprene
- 400A 600V
- Brass threaded inserts for #10-32 bolt (Not provided)
- Optional drilled out version (X) for #10-32 nut and bolt

| Wire Connection | M/F | Part # |
|------------------------------------|--------|--------------|
| 2/0-4/0 AWG double set screw | Male | CLS40MRB |
| | Female | CLS40FRB |
| One hole bus bar 5/16" - 18 thread | Male | CLS40MRB-BB |
| | Female | CLS40FRB-BB |
| Two hole bus bar 5/16" - 18 thread | Male | CLS40MRB-BB2 |
| | Female | CLS40FRB-BB2 |
| 1-1/8" threaded stud | Male | CLS40MRSB |
| | Female | CLS40FRSB |
| 1-1/2" threaded stud | Male | CLS40MRSB1.5 |
| | Female | CLS40FRSB1.5 |



WHEN YOU ORDER

Part # + Color Letter (A B C D E F G H) + Drill Out (X) + .OEM = Ordering Number

Examples: CL20MRB + -E + X(drill out) + .OEM = CL20MRB-EX.OEM

CLM2FR2 + -H = CLM2FR2-H

150A 600V Panel Mounts (CLM & CLSM)



Note: Panel mounts, mounting holes, and wiring connections are fully interchangeable with all competitive parts.



CLM Mini Panel Mounts

- Super Tough Nylon
- 150A 600V
- Comes with qty (3) #8 Self Tapping Screws for Mounting Flange
- Optional drilled out version (X) for #10-32 nut and bolt

| Wire Connection | M/F | Part # |
|----------------------------------|--------|--------|
| #8-#2 AWG double set screw | Male | CLMMR2 |
| | Female | CLMFR2 |
| 5/16"-18 threaded stud 3/4" long | Male | CLMMRS |
| | Female | CLMFRS |

A B C D E F G H



CLSM Mini Panel Mounts

- Santoprene
- 150A 600V
- Drilled out for #10-32 nut and bolt (Not provided)

| Wire Connection | M/F | Part # |
|----------------------------------|--------|---------|
| #8-#2 AWG double set screw | Male | CLSMMR2 |
| | Female | CLSMFR2 |
| 5/16"-18 threaded stud 3/4" long | Male | CLSMMRS |
| | Female | CLSMFRS |

A B C D E F G H

WHEN YOU ORDER

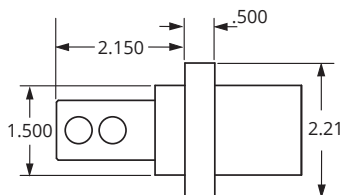
Part # + Color Letter (A B C D E F G H) + .OEM = Ordering Number

Examples: CLMMR2 + -E = CLMMR2-E

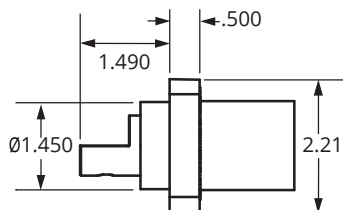
Panel Mount Dimensions

CL Panel Mounts

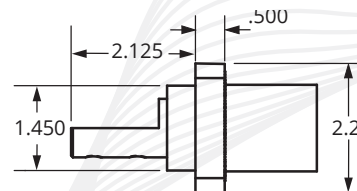
CL40MRB, CL40FRB, CL20MRB, CL20FRB,
CLS40MRB, CLS40FRB



CL40MRB-BB, CL40FRB-BB,
CLS40MRB-BB, CLS40FRB-BB

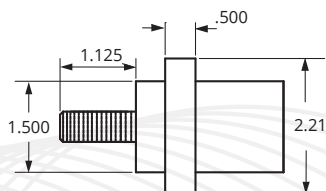


CLS40MRB-BB2, CLS40FRB-BB2

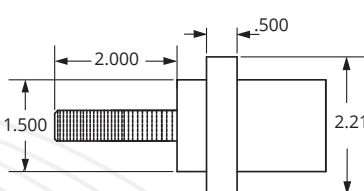


CLS Panel Mounts

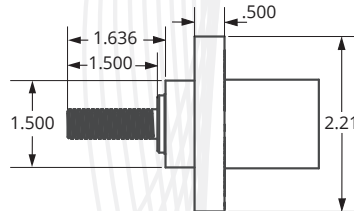
CL40MRSB, CL40FRSB,
CLS40MRSB, CLS40FRSB



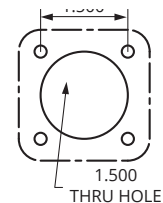
CL40MRSB2, CL40FRSB2



CL40MRSB1.5, CL40FRSB1.5

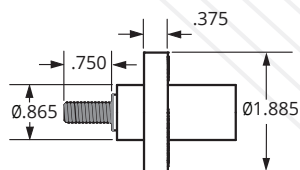


CL, CLS Panel Mount
Family Cut-out

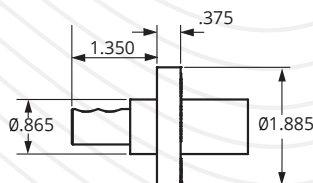


CLM/CLMS Mini Panel Mounts

CLMMRS, CLMFRS, CLSMMS, CLSMFRS



CLMMR2, CLMFR2, CLSMFR2



CLM Panel Mount Family Cut-out

