

CES and CESD Factory Sealed Receptacles

30 and 60 Amp Pin and Sleeve. Explosionproof.

Delayed-Action Safety Construction with Slide-Lok® Design. Pressure Wire Terminals.

NEC/CEC — 30 and 60 Amp CES:
Class I, Division 1 and 2, Groups C, D

NEC/CEC — 30 Amp CESD:
Class I, Division 1 and 2, Groups C, D

NEC/CEC — 60 Amp CESD:
Class I, Division 1 and 2, Groups D

Applications

- Locations where receptacles are used with stationary or portable electrically operated devices such as:
 - Lighting systems
 - Conveyors
 - Heaters
 - Motor-generator sets
 - Air conditioners
 - Compressors
 - Pumps
- Class I: classified locations such as:
 - Petrochemical plants
 - Petroleum refineries
 - Paint and chemical plants
 - Any location where ignitable vapors or gases are present

Features

- Factory sealed. No external seals required. Arcing is safely confined to receptacle interior.
- Energized receptacle contacts deeply recessed to reduce danger of accidental touching.
- Style 2 (shell and extra pole) grounding.
- Spring door keeps dust out of receptacle when plug is not in use.
- Unique design brass contacts exert constant pressure along entire contact surface and provide superior electrical contact.
- Contacts have beryllium copper wire springs.
- Plug mechanical cable clamps prevent strain on cables; they meet or exceed UL strain relief pull-out requirements.
- Neoprene bushing compressed by cable collar prevents entrance of water.
- Insulators provide superior dielectric and mechanical strength and lowest arc tracking.
- Smooth, rounded integral bushing in each hub protects conductor insulation.
- Delayed action construction. To operate, insert plug to first stop, move Slide-Lok® slide to right and push plug fully forward.
- CPH plug fits Powertite™ Series hazardous location receptacles.

Standard Materials

- Receptacle and cover: copperfree (4/10 of 1% max.) aluminum
- Mounting box: malleable iron
- Insulating blocks: fiber glass reinforced polyester

Standard Finishes

- Malleable iron mounting bodies: triple-coat (1) zinc electroplate, (2) chromate and (3) epoxy powder coat
- Aluminum receptacles: ceramic burnished
- Cord connector housings and caps: epoxy powder coat

NEC/CEC Certifications and Compliances

- UL Standard: UL 1010 (UL 1203), UL 894, UL 1682, UL 1686
- UL Listed: E10784
- CSA Standard: C22. No 30, C22.2 No. 159, C22.2 No 182.1
- CSA Certified: 038644



CES and CESD Factory Sealed Receptacles

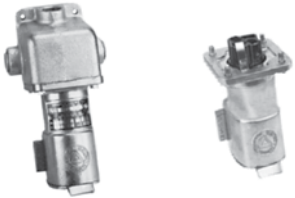
30 and 60 Amp Pin and Sleeve. Explosionproof

Delayed-Action Safety Construction with Slide-Lok® Design. Pressure Wire Terminals.

NEC/CEC — 30 and 60 Amp CES:
Class I, Division 1 and 2, Groups C, D


NEC/CEC — 30 Amp CESD:
Class I, Division 1 and 2, Groups C, D

NEC/CEC — 60 Amp CESD:
Class I, Division 1 and 2, Groups D


| | | Catalog Number | | | | | | |
|---|-----|----------------|-------------------|---------------------|----------------|-------------------|----------------------|--|
| | Amp | Wire/Pole | Hub Size (Inches) | Complete With Box ① | Back Box Only | Receptacle Only ② | Replacement Interior | |
| CES Receptacles — 30 Amp and 60 Amp, 125-250 Vac (See HP ratings below.) | | | | | | | | |
| Furnished with one vertical and two horizontal feed-thru hubs. | | | | | | | | |
|  CES CESR | 30 | 2W, 3P | 3/4 | CES-3023 | CES-30B | CESR-3023 | CERI-3023 | |
| | | 3W, 4P | 3/4 | CES-3034 | CES-30B | CESR-3034 | CERI-3034 | |
| | 60 | 2W, 3P | 1-1/4 | CES-6023 | CES-60B | CESR-6023 | CERI-6023 | |
| | | 3W, 4P | 1-1/4 | CES-6034 | CES-60B | CESR-6034 | CERI-6034 | |

CESD Receptacles — 30 Amp and 60 Amp, 125-250 Vac

(See HP ratings below.)
Furnished with vertical feed-thru hubs.

| | | | | | | | |
|---|----|--------|-------|------------------|-----------------|------------------|------------------|
|  CESD CESR | 30 | 2W, 3P | 3/4 | CESD-3023 | CESD-30B | CESR-3023 | CERI-3023 |
| | | 3W, 4P | 3/4 | CESD-3034 | CESD-30B | CESR-3034 | CERI-3034 |
| | 60 | 2W, 3P | 1-1/4 | CESD-6023 | CESD-60B | CESR-6023 | CERI-6023 |
| | | 3W, 4P | 1-1/4 | CESD-6034 | CESD-60B | CESR-6034 | CERI-6034 |

CPH Plugs and Plug Interiors for Use with Receptacles Above

| | | Amp | Wire/Pole | Cable Dia. (Inches) | Complete Plug | Replacement Interior |
|--|------|--------|------------|---------------------|--------------------|----------------------|
|  CPH Plug (30 and 60 Amp) Pressure Terminals Interior | 30 | 2W, 3P | .390-1.375 | CPH3023BC | CEPI-3023B | |
| | | 3W, 4P | .390-1.375 | CPH3034BC | CEPI-3034B | |
| | 60 ⑤ | 2W, 3P | .390-1.375 | CPH6023BC | CEPI-6023BC | |
| | | 3W, 4P | .390-1.375 | CPH6034BC | CEPI-6034BC | |

CES/CESD Maximum Horsepower Ratings

| 125-250 Vac | | | | | 480③-600④ Vac | | | | |
|-------------|-------|---------|----------|----------------|---------------|-------|---------|----------|----------------|
| Wire/Pole | Phase | Max. HP | Max. Amp | Catalog Number | Wire/Pole | Phase | Max. HP | Max. Amp | Catalog Number |
| 2W, 3P | 1 | 1-1/2 | 30 | CES/CESD-3023 | 2W, 3P | 1 | 1/2 | 7 | CES/CESD-3023 |
| 3W, 4P | 3 | 3 | 30 | CES/CESD-3034 | 3W, 4P | 3 | 1 | 7 | CES/CESD-3034 |
| 2W, 3P | 1 | 1-1/2 | 60 | CES/CESD-6023 | 2W, 3P | 1 | 1-1/2 | 30 | CES/CESD-6023 |
| 3W, 4P | 3 | 5 | 60 | CES/CESD-6034 | 3W, 4P | 3 | 5 | 30 | CES/CESD-6034 |

① UL Listed with Mounting Box.

② NOT UL Listed. Only UL Listed when Receptacle is provided with Mounting Box.

③ 480 Vac is certified by UL for NEC.

④ 600 Vac is certified by CSA for CEC.

⑤ 60 Amp CPH plugs with -BC suffix are NOT UL listed.

CES and CESD Factory Sealed Receptacles

30 and 60 Amp Pin and Sleeve. Explosionproof

Delayed-Action Safety Construction with Slide-Lok® Design. Pressure Wire Terminals.

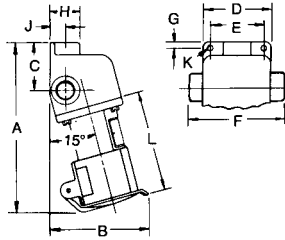
NEC/CEC — 30 and 60 Amp CES:
Class I, Division 1 and 2, Groups C, D

NEC/CEC — 30 Amp CESD:
Class I, Division 1 and 2, Groups C, D

NEC/CEC — 60 Amp CESD:
Class I, Division 1 and 2, Groups D

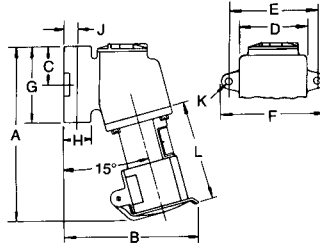
Dimensions in Millimeters (Inches)

CES Receptacles



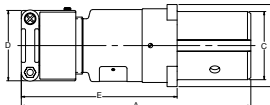
| Hub Size (Inches) | Max. Amp | Dimensions in Millimeters (Inches) | | | | | | | | | | |
|-------------------|----------|------------------------------------|--------------|-------------|--------------|--------------|--------------|-------------|-------------|-------------|----------------|--------------|
| | | A | B | C | D | E | F | G | H | J | K | L |
| 3/4 | 30 | 211.0 (8.31) | 125.4 (4.94) | 60.4 (2.38) | 85.8 (3.38) | 66.8 (2.63) | 119.1 (4.69) | 7.8 (0.31) | 38.1 (1.50) | 19.8 (0.78) | 4/1 σ | 128.7 (5.07) |
| 1-1/4 | 60 | 301.7 (11.88) | 174.7 (6.88) | 73.1 (2.88) | 133.3 (5.25) | 111.2 (4.38) | 185.6 (7.31) | 11.1 (0.44) | 65.0 (2.56) | 35.0 (1.38) | 32/13 σ | 180.3 (7.10) |

CESD Receptacles



| Hub Size (Inches) | Max. Amp | Dimensions in Millimeters (Inches) | | | | | | | | | | |
|-------------------|----------|------------------------------------|--------------|-------------|--------------|--------------|--------------|--------------|-------------|-------------|----------------|--------------|
| | | A | B | C | D | E | F | G | H | J | K | L |
| 3/4 | 30 | 220.7 (8.69) | 171.4 (6.75) | 47.7 (1.88) | 85.8 (3.38) | 111.2 (4.38) | 130.3 (5.13) | 95.2 (3.75) | 35.0 (1.38) | 17.5 (0.69) | 32/11 σ | 128.7 (5.07) |
| 1-1/4 | 60 | 323.8 (12.75) | 236.4 (9.31) | 81.0 (3.19) | 133.3 (5.25) | 158.7 (6.25) | 184.1 (7.25) | 160.2 (6.31) | 65.0 (2.56) | 35.0 (1.38) | 32/11 σ | 180.3 (7.10) |

CPH Plugs



| Max. Amp | Wire/Pole | Dimensions in Millimeters (Inches) | | | | |
|----------|----------------|------------------------------------|-------------|-------------|-------------|--------------|
| | | A | B | C | D | E |
| 30 | 2W, 3P; 3W, 4P | 155.7 (6.13) | 60.4 (2.38) | 47.2 (1.86) | 6.68 (2.63) | 113.7 (4.44) |
| 60 | 2W, 3P | 123.9 (8.44) | 77.7 (3.06) | 56.6 (2.23) | 6.68 (2.63) | 144.5 (5.69) |
| 60 | 3W, 4P | 123.9 (8.44) | 77.7 (3.06) | 64.7 (2.55) | 6.68 (2.63) | 144.5 (5.69) |