
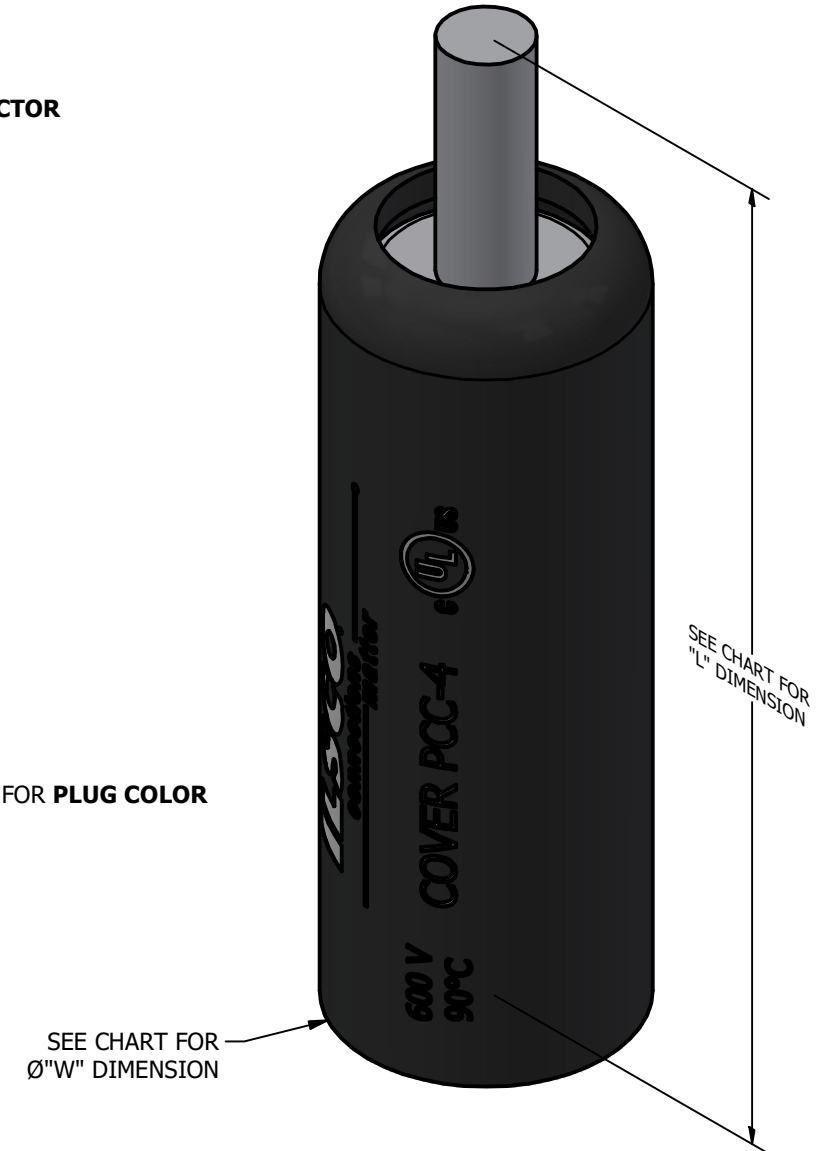
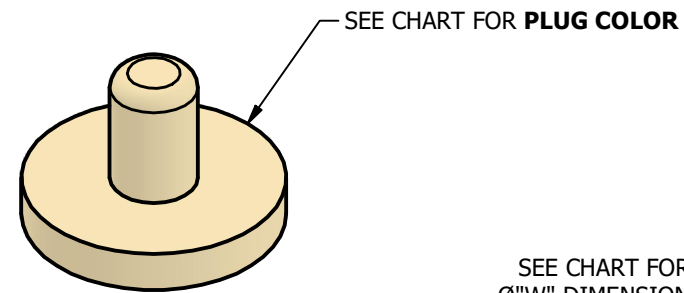
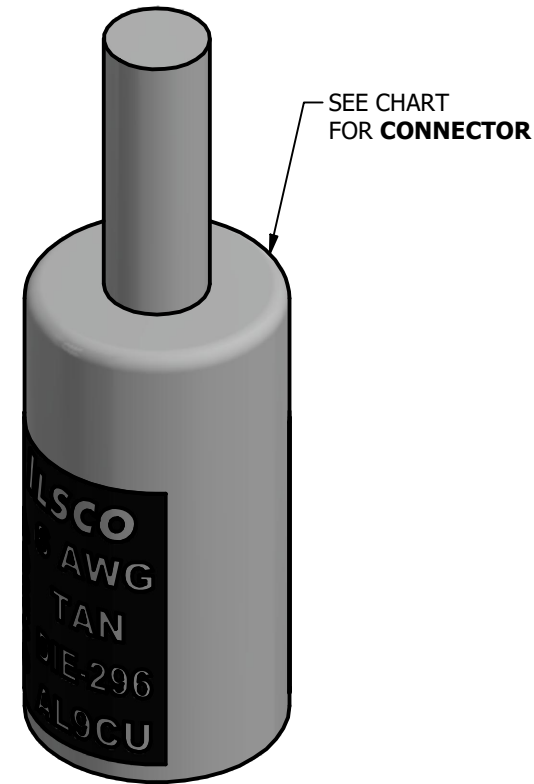
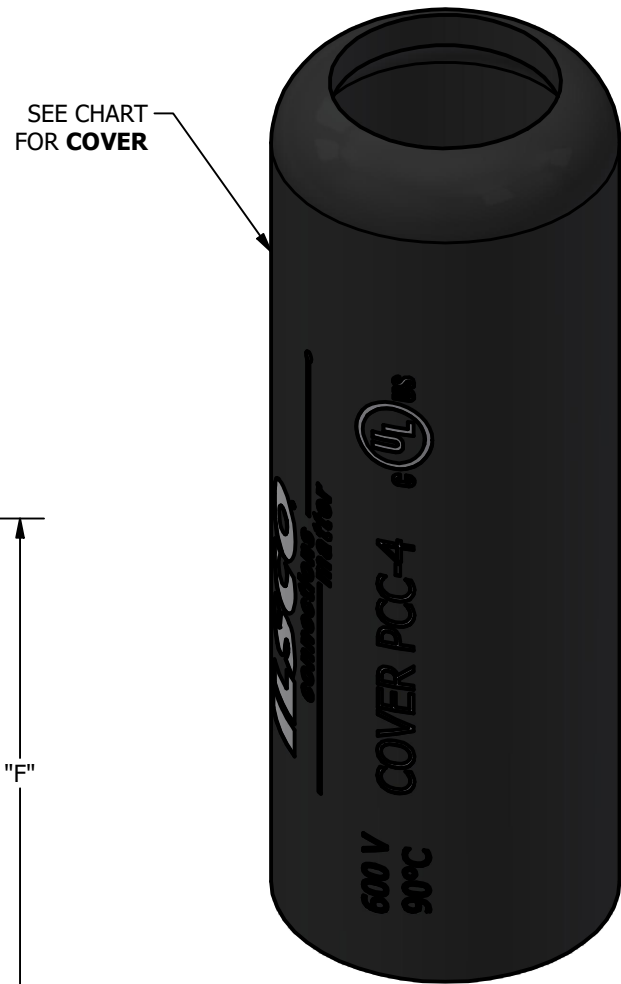
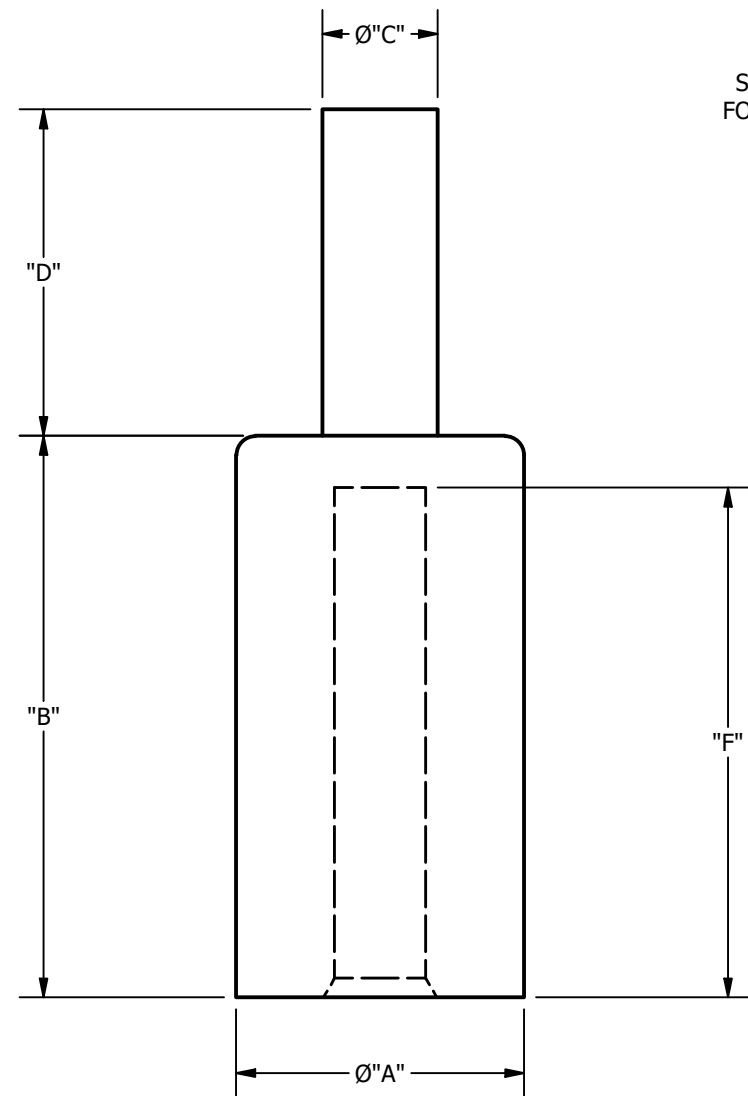


NOTE:


1. TIN PLATED ALUMINUM COMPRESSION PIN ADAPTERS.
2. PRE-FILLED WITH DE-OX INHIBITOR.
3. INSULATING COVER SUPPLIED WITH CONNECTOR

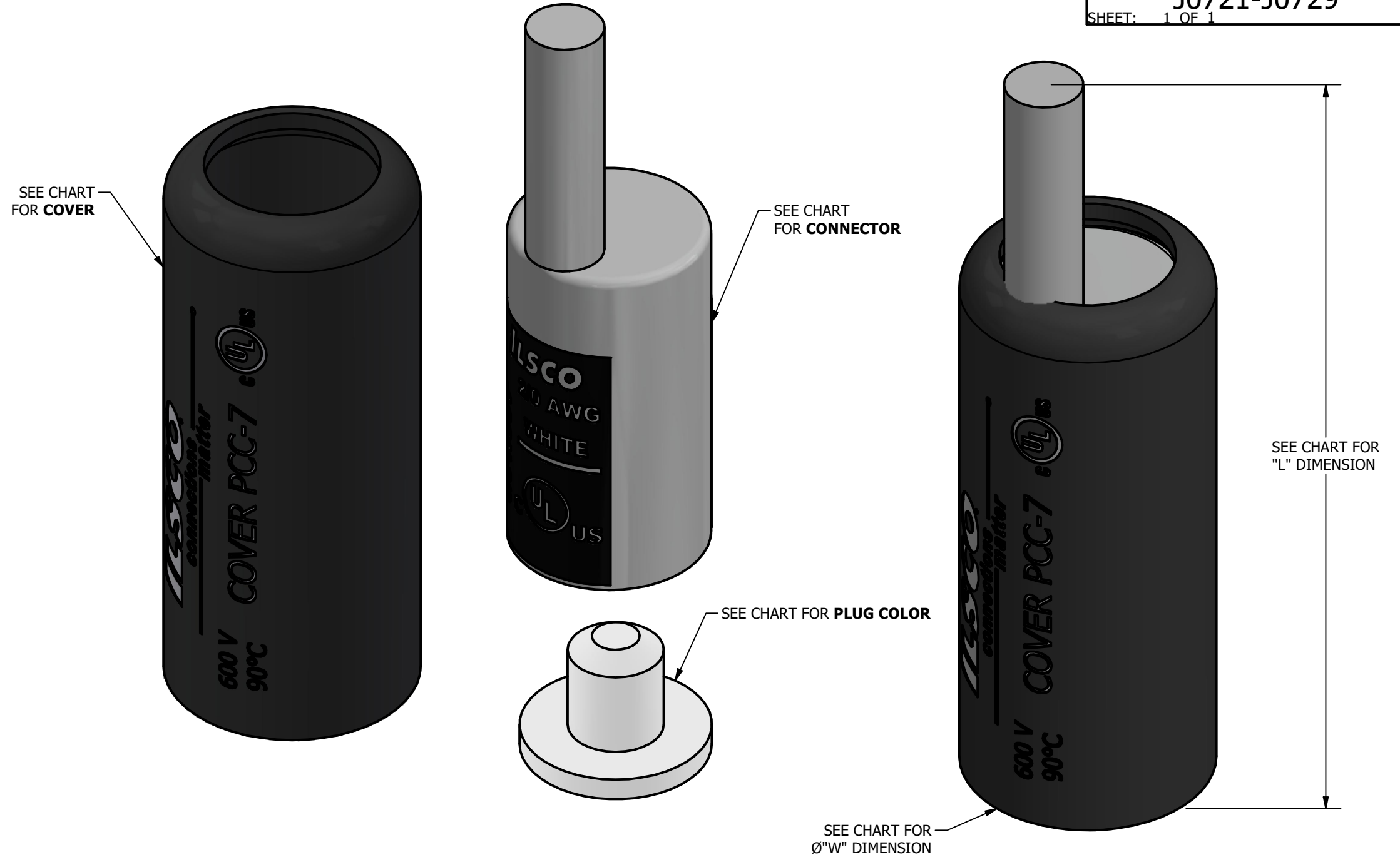
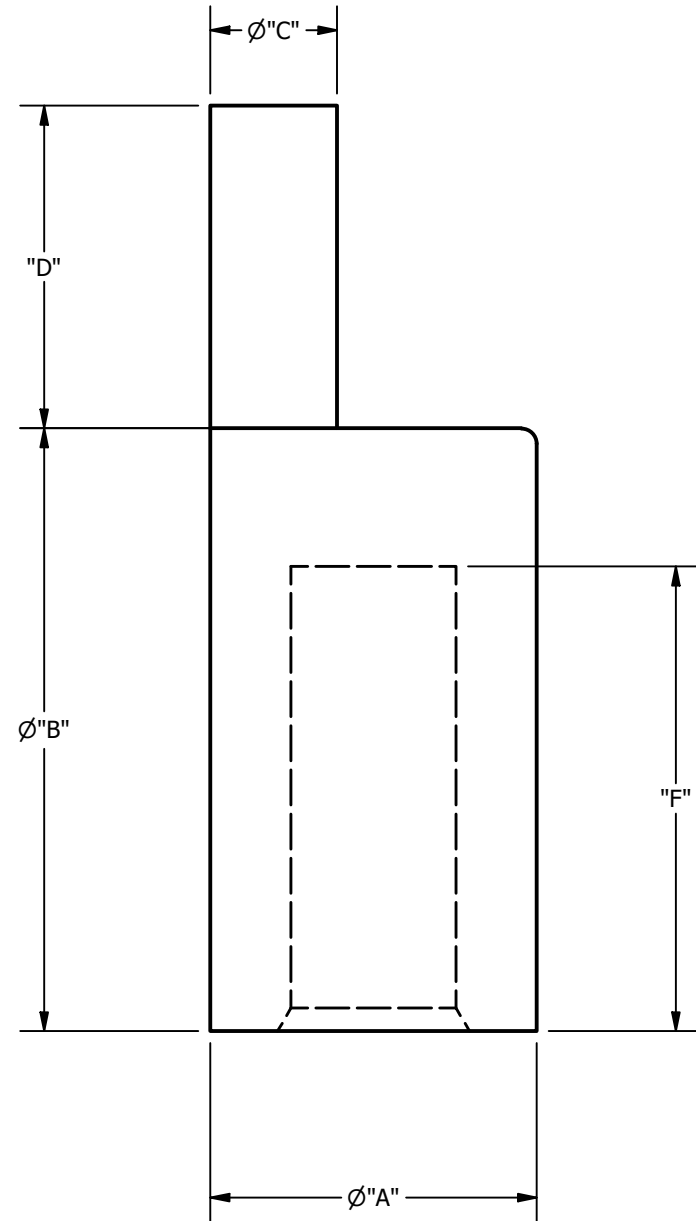
SCREW: NONE	MATERIAL: ALUMINUM/PLASTISOL	REV: B	 <small>800-776-9775 www.ilsco.com</small>
END ITEM: SEE CHART	PLATING: TIN	DRAWN BY:LU SCALE:	
INFORMATION SHEET:FORM 287	MARKING: SEE DRAWING	DATE:2/17/2023 SIZE: B	
DWG NO: J0706-J0720			SHEET: 1 OF 1



CATALOG NUMBER	COVER CATALOG NUMBER	COLOR PLUG	"L"	"W"	"A"	"B"	"C"	"D"	"F"
ACMN-6	PCC-4	TAN	2.813	0.789	0.600	1.170	0.240	0.680	1.062
ACMN-4	PCC-4	TAN	2.813	0.789	0.600	1.170	0.240	0.680	1.097
ACMN-2	PCC-4	TAN	2.813	0.789	0.600	1.170	0.240	0.680	1.090
ACMN-1	PCC-4	TAN	2.973	0.789	0.600	1.170	0.260	0.840	1.103
ACMN-1/0	PCC-4	TAN	2.973	0.789	0.600	1.170	0.290	0.840	1.080
ACMN-2/0	PCC-7	WHITE	3.318	1.070	0.850	1.370	0.330	0.840	1.210
ACMN-3/0	PCC-7	WHITE	3.698	1.070	0.850	1.370	0.370	1.220	1.234
ACMN-4/0	PCC-7	WHITE	3.698	1.070	0.850	1.370	0.420	1.220	1.245
ACMN-250	PCC-9	BROWN	3.948	1.285	1.100	1.410	0.470	1.220	1.200
ACMN-300	PCC-9	BROWN	4.068	1.285	1.100	1.410	0.530	1.340	1.219
ACMN-350	PCC-9	BROWN	4.068	1.285	1.100	1.410	0.570	1.340	1.232
ACMN-400	PCC-11	PINK	4.707	1.495	1.310	1.480	0.630	1.600	1.280
ACMN-500	PCC-11	PINK	4.707	1.495	1.310	1.480	0.680	1.600	1.240
ACMN-600	PCC-12	YELLOW	4.998	1.895	1.460	2.030	0.730	1.640	1.759
ACMN-750	PCC-12	YELLOW	5.118	1.895	1.460	2.030	0.810	1.760	1.759

- NOTE:**
1. TIN PLATED ALUMINUM COMPRESSION PIN ADAPTERS.
 2. PRE-FILLED WITH DE-OX INHIBITOR.
 3. INSULATING COVER SUPPLIED WITH CONNECTOR

SCREW: NONE	MATERIAL: ALUMINUM/PLASTISOL	REV: B	 <small>GB Gardner Berger</small> <small>ILSCO INSULATION</small> <small>KING INNOVATION</small> <small>BERGEN INDUSTRIES, LLC</small> 800-776-9775 www.ilSCO.com	
END ITEM: SEE CHART	PLATING: TIN	DRAWN BY:LU		SCALE:
INFORMATION SHEET:FORM 287	MARKING: SEE DRAWING	DATE:2/17/2023		SIZE: B
DWG NO: J0721-J0729			SHEET: 1 OF 1	



CATALOG NUMBER	COVER CATALOG NUMBER	COLOR PLUG	"L"	"W"	"A"	"B"	"C"	"D"	"F"
ACON-2/0	PCC-7	WHITE	3.608	1.070	0.850	1.570	0.330	1.130	1.277
ACON-4/0	PCC-7	WHITE	3.758	1.070	0.850	1.520	0.420	1.280	1.216
ACON-250	PCC-9	BROWN	4.008	1.285	1.100	1.520	0.470	1.280	1.232
ACON-300	PCC-9	BROWN	4.198	1.285	1.100	1.630	0.530	1.470	1.248
ACON-500	PCC-11	PINK	4.797	1.495	1.310	1.710	0.680	1.690	1.346
ACON-600	PCC-12	YELLOW	5.101	1.895	1.460	2.270	0.730	1.730	1.802
ACON-750	PCC-12	YELLOW	5.088	1.895	1.460	2.470	0.810	1.730	1.848