


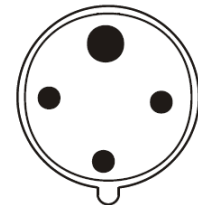
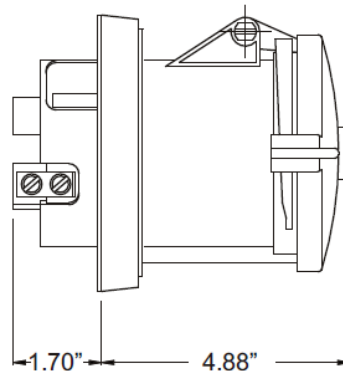
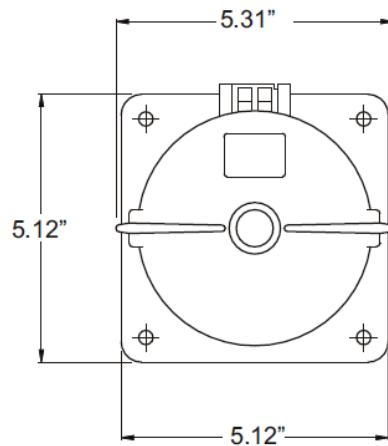
MENNEKES
Electrical Products
277 Fairfield Road
Fairfield, NJ 07004
800-882-7584
www.MENNEKES.com

REVERSE SERVICE INLET, PANEL MOUNTED

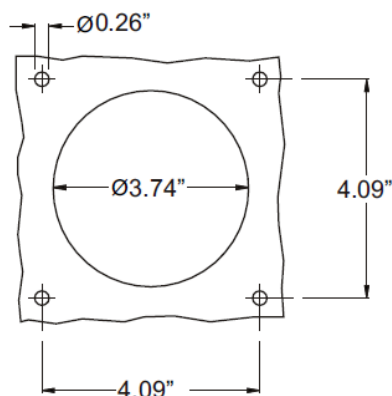
Part No.	ME 4100B12R
Description:	100 Amp 125/250Vac 3 Pole, 4 Wire Shore Power Inlet
Construction:	Watertight IEC IP 67
Approvals:	 us to UL Standards 1682; 1686 and LISTED CSA C22.2 No. 182.1 IEC 60309-1; IEC 60309-2

IEC COLOR CODE: Grey (Ship to Shore Standard)

GROUND SOCKET: 12 Hour Position Mates with Female in 12 Hour Position.



Front View of Inlet



Panel Cut Out

Wire Range: 1/0—#3 AWG

Drawing Not to Scale

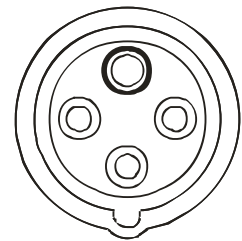
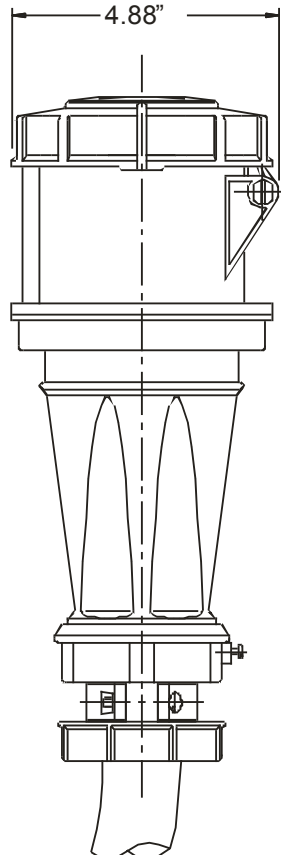
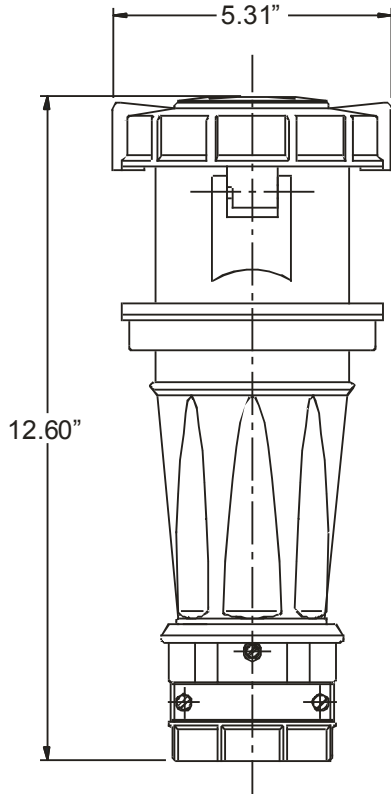
MENNEKES
Electrical Products
277 Fairfield Road
Fairfield, NJ 07004
800-882-7584
www.MENNEKES.com

CONNECTOR, IN-LINE

Part No.	ME 4100C12M
Description:	100 Amp 125/250Vac 3 Pole, 4 Wire Connector
Construction:	Watertight IEC IP 67
Approvals:	 us to UL Standards 1682; 1686 and CSA C22.2 No. 182.1 IEC 60309-1; IEC 60309-2

IEC COLOR CODE: Yellow

GROUND SOCKET: 12 Hour Position Mates with Male in 12 Hour Position.



Front View of Connector

Wire Range: 1/0 - #3 AWG
Cord Range: .98" - 1.97"
Threaded Cable Entry: 2" NPT

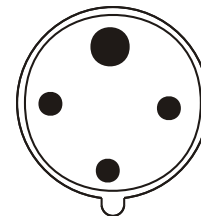
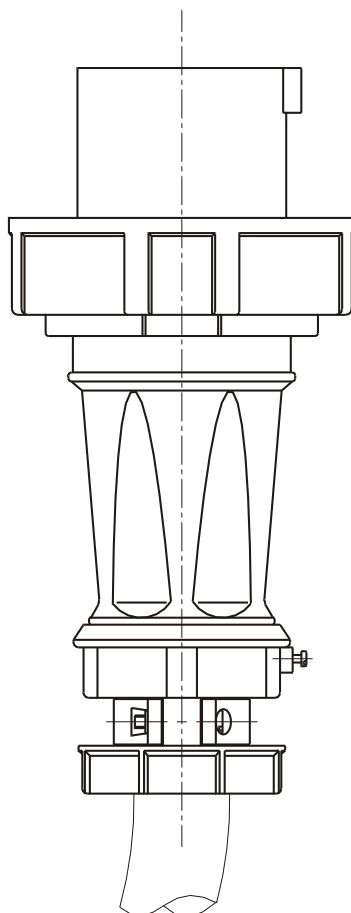
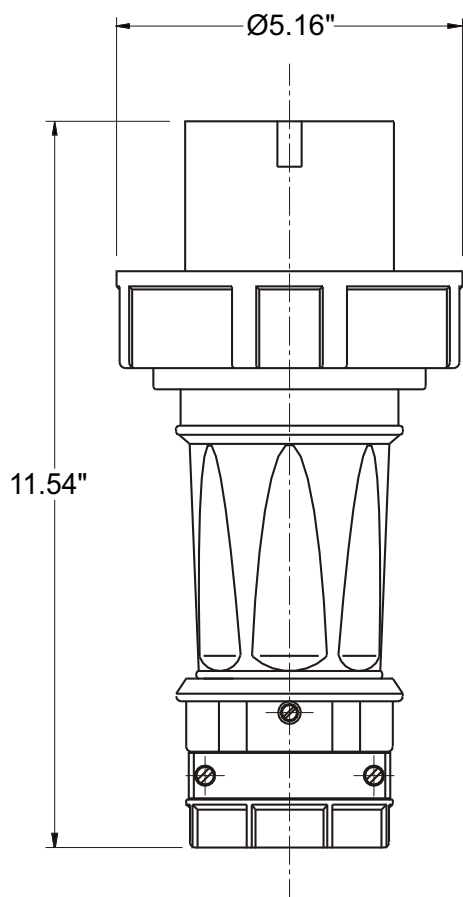
Drawing Not to Scale

PLUG, IN-LINE

Part No.	ME 4100P12M
Description:	100 Amp 125/250Vac 3 Pole, 4 Wire Plug
Construction:	Watertight IEC IP 67
Approvals:	UL Listed Standards 1682; 1686 CSA Certification to Spec. C22.2 No. 182.1 IEC 60309-1; IEC 60309-2

IEC COLOR CODE: Yellow (Ship to Shore Standard)

GROUND SOCKET: 12 Hour Position Mates with Female in 12 Hour Position.



Front View of Plug

Wire Range: 1/0 - #3 AWG
Cord Range: .98" - 1.97"
Threaded Cable Entry: 2" NPT

Drawing Not to Scale

RECEPTACLE, PANEL MOUNTING

PART NO.: ME 4100R12M

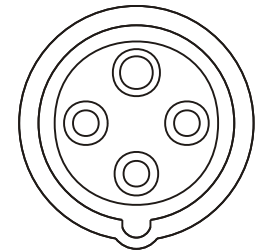
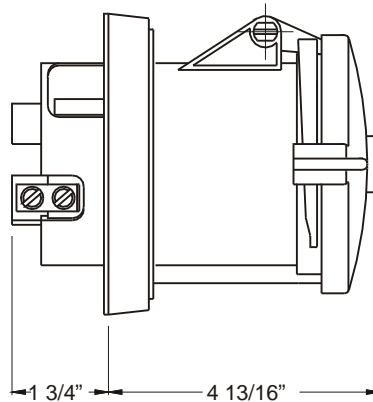
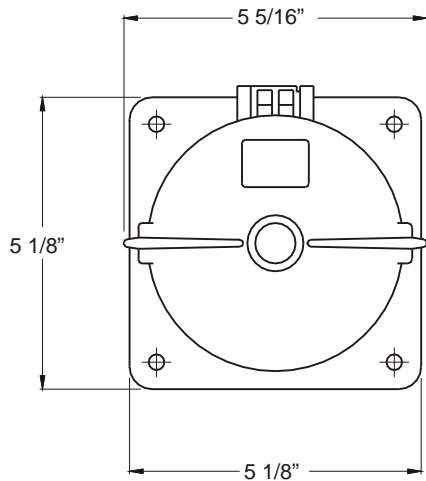
DESCRIPTION: 100AMP 1 Phase 4W 125/250VAC Marine Grade Receptacle

CONSTRUCTION: Watertight IEC IP 67

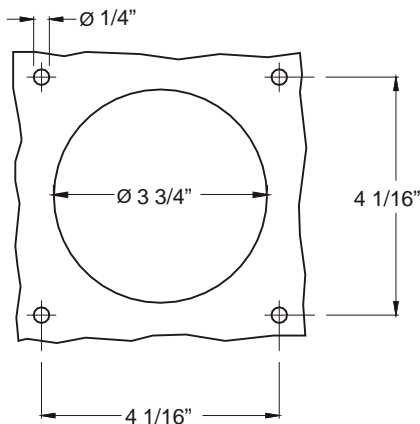
APPROVALS: UL Listed Standards 1682; 1686
 CSA Certification to Spec. C22.2 No.182.1
 IEC 309 - 1; IEC309 - 2

IEC COLOR CODE: Gray

GROUND PIN: 12 Hour Position Mates with Male in 12 Hour Position.



Front View of Receptacle



Panel Cut Out

*All Sleeves are Nickel Plated

*All Screws are Stainless Steel


Wire Range: 1/0 - #3 AWG

Dimensions in Inches Unless Otherwise Stated.

Drawing Not to Scale.

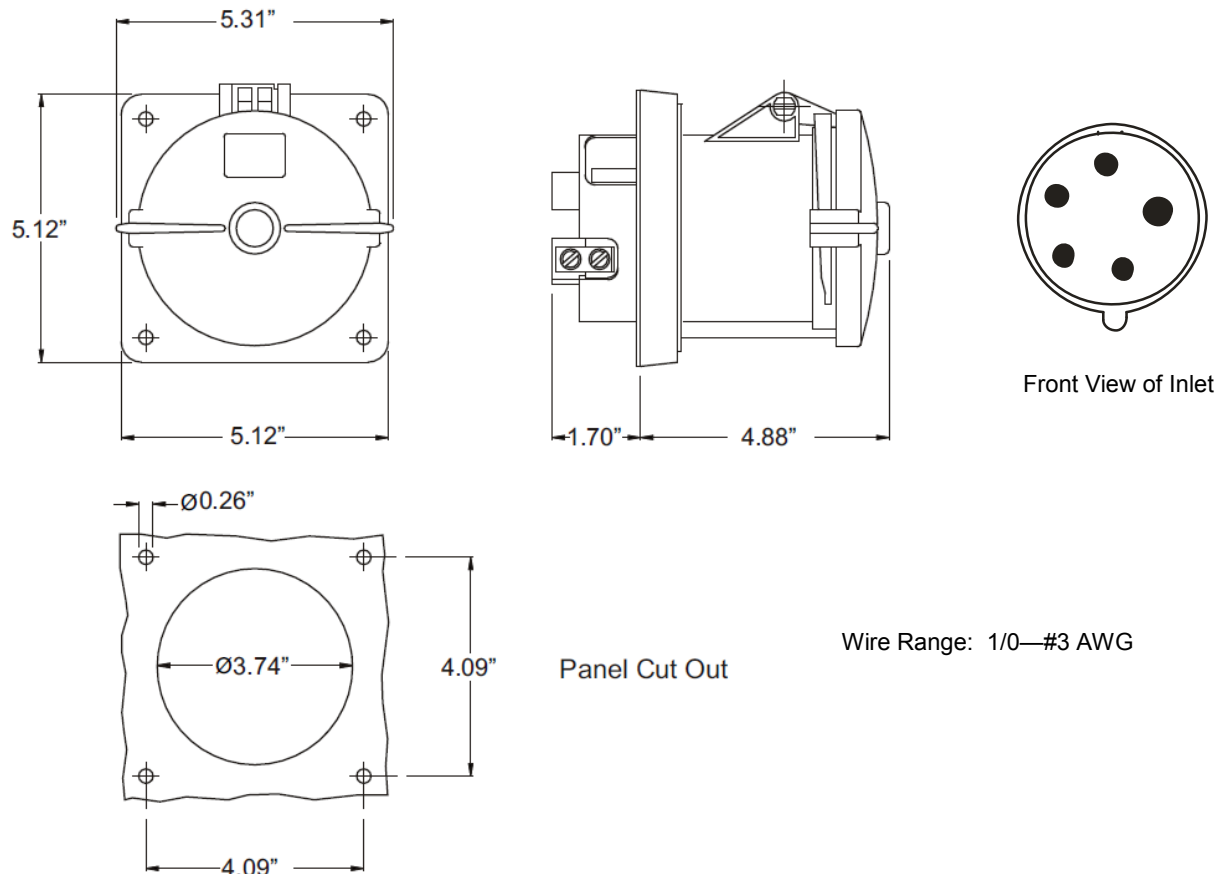
MENNEKES
Electrical Products
277 Fairfield Road
Fairfield, NJ 07004
800-882-7584
www.MENNEKES.com

REVERSE SERVICE INLET, PANEL MOUNTED

Part No.	ME 5100B9R
Description:	100 Amp 3ØY 120/208Vac 4 Pole, 5 Wire Shore Power Inlet
Construction:	Watertight IEC IP 67
Approvals:	 us to UL Standards 1682; 1686 and LISTED CSA C22.2 No. 182.1 IEC 60309-1; IEC 60309-2

IEC COLOR CODE: Grey (Ship to Shore Standard)

GROUND SOCKET: 3 Hour Position Mates with Female in 9 Hour Position.



Drawing Not to Scale



MY POWER CONNECTION

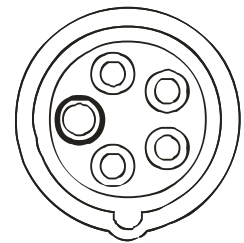
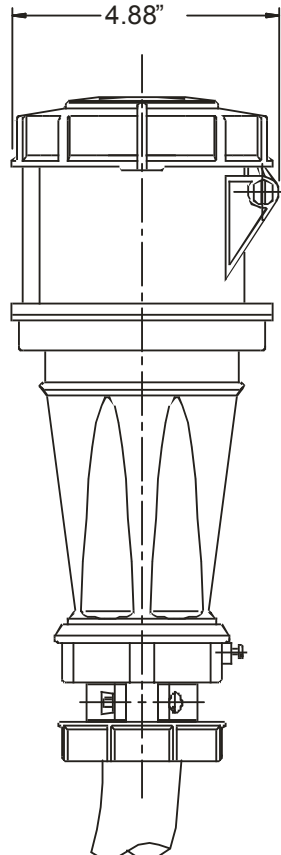
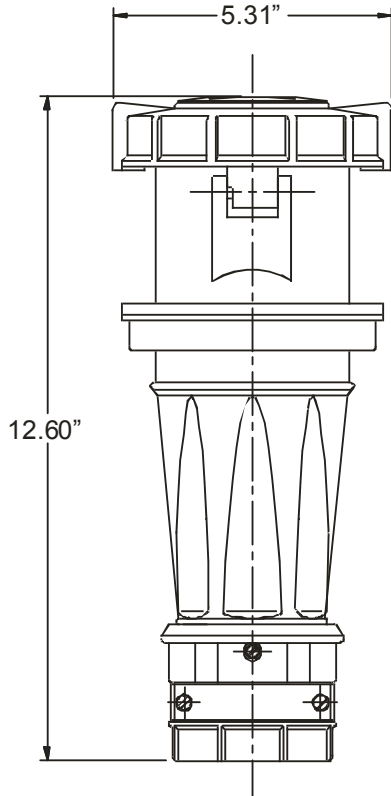
MENNEKES
Electrical Products
277 Fairfield Road
Fairfield, NJ 07004
800-882-7584
www.MENNEKES.com

CONNECTOR, IN-LINE

Part No.	ME 5100C9M
Description:	100 Amp 3ØY 120/208Vac 4 Pole, 5 Wire Connector
Construction:	Watertight IEC IP 67
Approvals:	 us to UL Standards 1682; 1686 and CSA C22.2 No. 182.1 IEC 60309-1; IEC 60309-2

IEC COLOR CODE: Yellow

GROUND SOCKET: 9 Hour Position Mates with Male in 3 Hour Position.



Front View of Connector

Wire Range: 1/0 - #3 AWG
Cord Range: .98" - 1.97"
Threaded Cable Entry: 2" NPT


Drawing Not to Scale



MY POWER CONNECTION

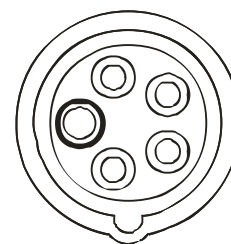
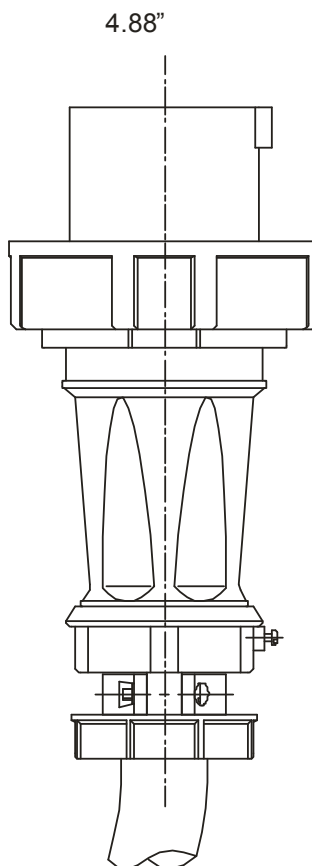
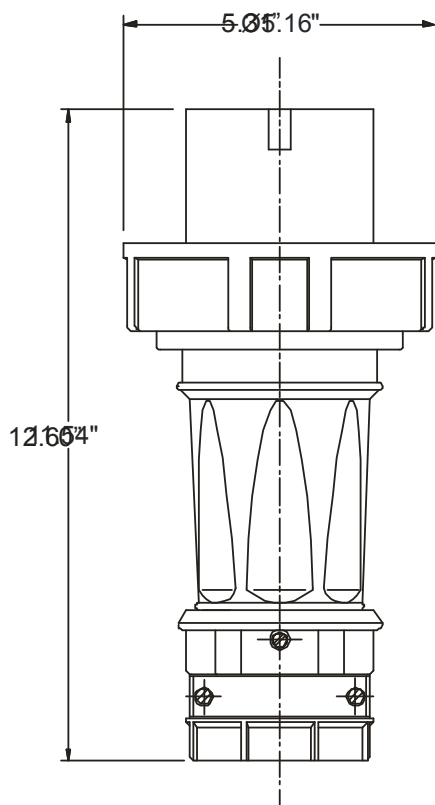
MENNEKES
Electrical Products
277 Fairfield Road
Fairfield, NJ 07004
800-882-7584
www.MENNEKES.com

REVERSE SERVICE CONNECTOR, IN-LINE

Part No.	ME 5100C9R
Description:	100 Amp 3ØY 120/208Vac 4 Pole, 5 Wire Connector for Inlet
Construction:	Watertight IEC IP 67
Approvals:	 us to UL Standards 1682; 1686 and CSA C22.2 No. 182.1 IEC 60309-1; IEC 60309-2

IEC COLOR CODE: Yellow

GROUND SOCKET: 9 Hour Position Mates with Male in 3 Hour Position.




Front View of Connector

Wire Range: 1/0 - #3 AWG
Cord Range: .98" - 1.97"
Threaded Cable Entry: 2" NPT

Drawing Not to Scale

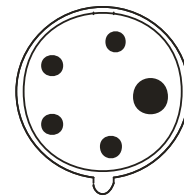
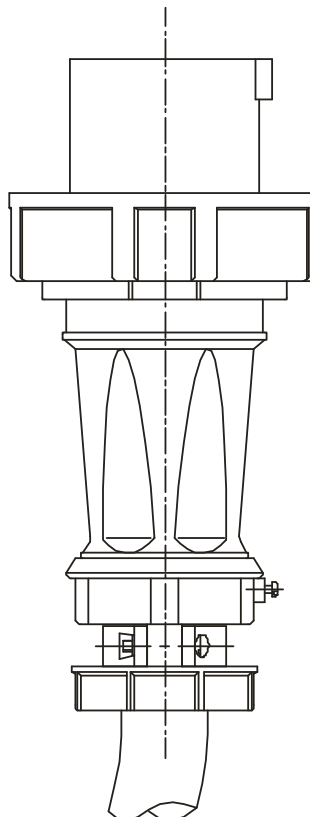
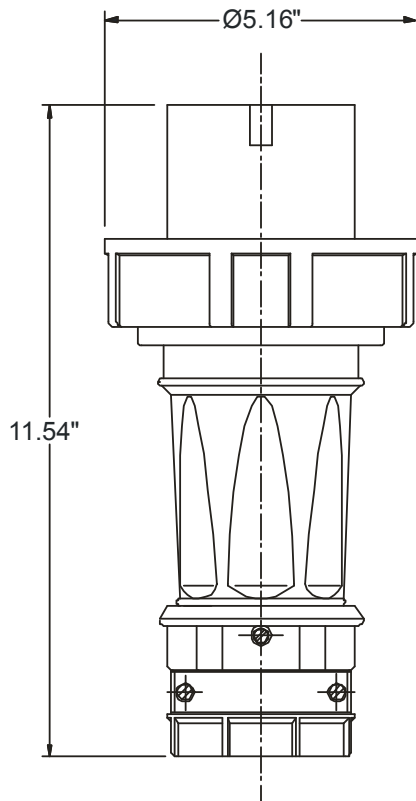
MENNEKES
Electrical Products
277 Fairfield Road
Fairfield, NJ 07004
800-882-7584
www.MENNEKES.com

PLUG, IN-LINE

Part No.	ME 5100P9M
Description:	100 Amp 3ØY 120/208Vac 4 Pole, 5 Wire Plug
Construction:	Watertight IEC IP 67
Approvals:	 us to UL Standards 1682; 1686 and CSA C22.2 No. 182.1 IEC 60309-1; IEC 60309-2

IEC COLOR CODE: Yellow

GROUND SOCKET: 3 Hour Position Mates with Female in 9 Hour Position.



Front View of Plug

Wire Range: 1/0 - #3 AWG
Cord Range: .98" - 1.97"
Threaded Cable Entry: 2" NPT

Drawing Not to Scale

RECEPTACLE, PANEL MOUNTING

PART NO.: ME 5100R9M

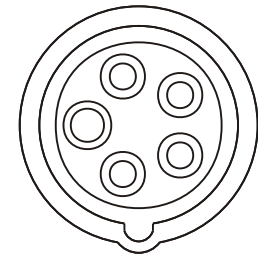
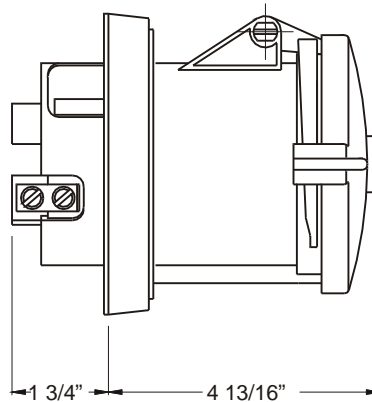
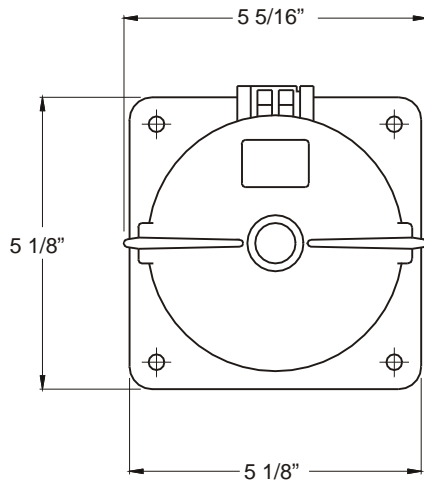
DESCRIPTION: 100AMP 3Phase Y 5W 120/208VAC Marine Grade Receptacle

CONSTRUCTION: Watertight IEC IP 67

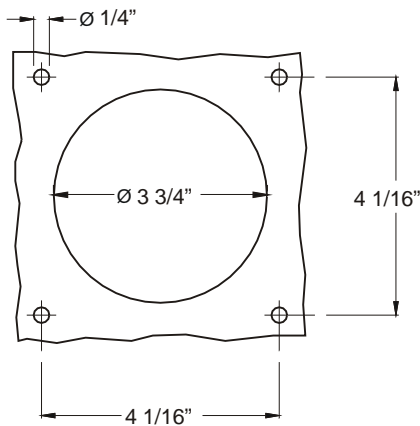
APPROVALS: UL Listed Standards 1682; 1686
 CSA Certification to Spec. C22.2 No.182.1
 IEC 309 - 1; IEC309 - 2

IEC COLOR CODE: Gray

GROUND PIN: 9 Hour Position Mates with Male in 3 Hour Position.



Front View of Receptacle



Panel Cut Out

*All Sleeves are Nickel Plated

*All Screws are Stainless Steel

Wire Range: 1/0 - #3 AWG

Dimensions in Inches Unless Otherwise Stated.

Drawing Not to Scale.