

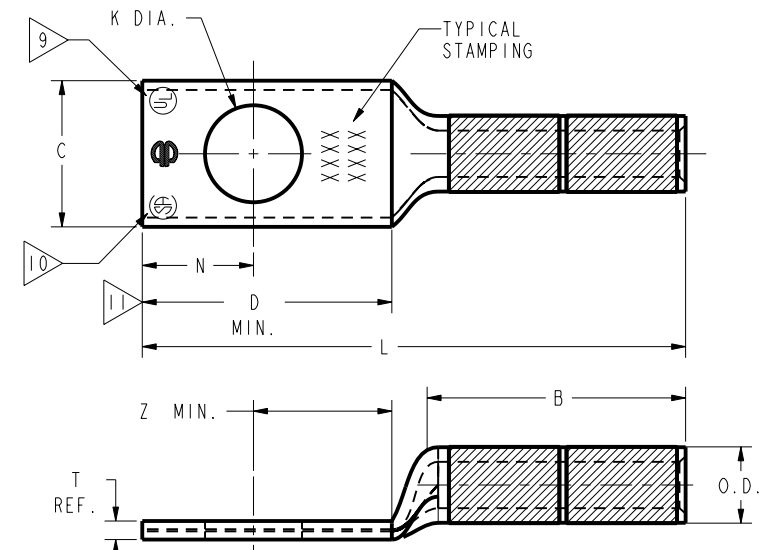
CATALOG NUMBER	STRANDED COPPER CONDUCTOR ACCOMMODATED			BOLT SIZE	METRIC BOLT SIZE	DIMENSIONS							
	CODE (AWG)	NAVY	METRIC SIZE (CLASS 2)			B	C	K DIA.	L	N	O.D.	T REF.	Z MIN.
YA2CNT10	#2 AWG	60	----	#10	M5	1.25 [32]	.50 [13]	.21 [5]	2.10 [53]	.25 [6]	.42 [11]	.11 [3]	.27 [7]
YA2CTC10				#10	M5	1.25 [32]	.60 [15]	.21 [5]	2.10 [53]	.25 [6]	.42 [11]	.11 [3]	.27 [7]
YA2CTC14				1/4	M6	1.25 [32]	.60 [15]	.27 [7]	2.23 [57]	.31 [8]	.42 [11]	.11 [3]	.33 [8]
YA2CTC38				3/8	M10	1.25 [32]	.60 [15]	.41 [10]	2.41 [61]	.41 [10]	.42 [11]	.11 [3]	.42 [11]
YA2C				5/16	M8	1.25 [32]	.60 [15]	.33 [8]	2.29 [58]	.34 [9]	.42 [11]	.11 [3]	.36 [9]
YA2CN				1/2	M12	1.25 [32]	.83 [21]	.56 [14]	2.88 [73]	.63 [16]	.42 [11]	.12 [3]	.64 [16]
YA1CTC10	#1 AWG	75	----	#10	M5	1.38 [35]	.68 [17]	.21 [5]	2.27 [58]	.25 [6]	.46 [12]	.10 [3]	.27 [7]
YA1CTC14				1/4	M6	1.38 [35]	.68 [17]	.27 [7]	2.39 [61]	.31 [8]	.46 [12]	.10 [3]	.32 [8]
YA1CTC38				3/8	M10	1.38 [35]	.68 [17]	.41 [10]	2.58 [66]	.41 [10]	.46 [12]	.10 [3]	.42 [11]
YA1C				5/16	M8	1.38 [35]	.68 [17]	.33 [8]	2.45 [62]	.34 [9]	.46 [12]	.10 [3]	.36 [9]
YA1CN				1/2	M12	1.38 [35]	.83 [21]	.56 [14]	3.06 [78]	.63 [16]	.46 [12]	.12 [3]	.64 [16]
YA25TC10				1/0 AWG	100	----	#10	M5	1.38 [35]	.75 [19]	.21 [5]	2.30 [58]	.25 [6]
YA25	5/16	M8	1.38 [35]				.75 [19]	.33 [8]	2.48 [63]	.34 [9]	.46 [12]	.10 [3]	.36 [9]
YA25TC38	3/8	M10	1.38 [35]				.75 [19]	.40 [10]	2.61 [66]	.41 [10]	.46 [12]	.12 [3]	.42 [11]
YA25N	1/2	M12	1.38 [35]				.83 [21]	.56 [14]	3.05 [77]	.63 [16]	.46 [12]	.11 [3]	.64 [16]

CONNECTOR SIZE	TOLERANCES					
	B	C	K DIA.	L	N	O.D.
-8C THRU -25	±.06	±.04	±.02	±.09	±.03	±.01
-26 THRU -34	±.08	+ .04 - .06	±.02	±.12	±.03	±.01
-35 AND UP	±.09	±.06	±.02	±.15	±.06	±.01

TOLERANCE BLOCK

CATALOG NO.	COLOR CODE	DIE INFORMATION		MECHANICAL					HYDRAULIC					DIELESS (# CRIMPS)		WIRE STRIP LENGTH	
		DIE INDEX	TYPE	YIMRTC	OUR840	MD6 MD7	MD6--R2 MD7-34R	PATMD6 PAT600 Y500CT	Y34A Y34B Y34BH	Y35, Y39 Y750, PAT750	Y46, PAT46	Y45	Y48B	Y60BHU	MECHANICAL		HYDRAULIC
YA2CNT10 YA2CTC10 YA2CTC14 YA2CTC38 YA2C YA2CN	BROWN	10	BROWN DIE SET	BROWN (4)	X2CRT(2)	W2CRT(2) W2CVT(2)	W2CRT(2) W2CVT(2)	W2CRT(2) W2CVT(2)	-----	U2CRT(2)	U2CRT(2)	U2CRT(2)	-----	-----	MY29-3(2) MY29-11(2) MRC840(2)	PAT81KFT(2) Y81KFT(2) PAT4PC834(2) Y4PC834(2) PAT644(1) Y644(1)	1-5/16"
YA1CTC10 YA1CTC14 YA1CTC38 YA1C YA1CN	GREEN	11 375	GREEN DIE SET	GREEN (4)	X1CRT-1 (2)	W1CRT-1(2) W1CVT(2)	W1CRT-1(2) W1CVT(2)	W1CRT-1(2) W1CVT(2)	-----	U1CRT-1(2) U4CABT(2)	U1CRT-1(2) U4CABT(2)	U1CRT-1(2) U4CABT(2)	-----	-----	MY29-3(2) MY29-11(2) MRC840(4)	PAT81KFT(2) Y81KFT(2) PAT4PC834(2) Y4PC834(2) PAT644(1) Y644(1)	1-7/16"
YA25TC10 YA25 YA25TC38 YA25N	PINK	12 348	PINK DIE SET	-----	X25RT(4)	W25RT(4) W25VT(4)	W25RT(4) W25VT(4)	W25RT(4) W25VT(4)	A25R(2)	U25RT(2) U2CABT(2)	U25RT(2) U2CABT(2)	U25RT(2) U2CABT(2)	-----	-----	MY29-3(2) MY29-11(2) MRC840(4)	PAT81KFT(2) Y81KFT(2) PAT4PC834(2) Y4PC834(2) PAT644(1) Y644(1)	1-7/16"

- NOTES:
- MATERIAL : COPPER TUBING.
 - FINISH: ELECTRO-TIN PLATED.
 - CATALOG # PT6515 ADAPTOR IS REQUIRED TO USE "U" DIES IN Y45 SERIES TOOLS.
 - CATALOG # PUADP-1 ADAPTOR IS REQUIRED TO USE "U" DIES IN Y46 SERIES TOOLS.
 - Y35P3 INDENTOR ADAPTOR REQUIRED FOR Y34PR INDENTOR.
 - PERMANENT DIE IN TOOLING.
 - DIMENSIONS IN BRACKETS [] ARE IN MILLIMETERS ROUNDED OFF TO THE NEAREST MILLIMETER, UNLESS OTHERWISE NOTED, AND ARE FOR REFERENCE ONLY.
 - FOR USE BY CUSTOMERS THAT HAVE THIS HYPRESS™. NO NEW Y34A HYPRESSES™ ARE BEING PROCESSED. Y34A USES A-D NEST DIES ONLY.
 - CONNECTORS ARE UL LISTED; UNDRILLED VERSIONS ARE NOT UL LISTED.
 - CONNECTORS ARE CSA CERTIFIED; UNDRILLED VERSIONS ARE NOT CSA CERTIFIED.
 - FOR UNDRILLED VERSIONS ADD SUFFIX "U" TO END OF CATALOG NUMBER. FOR UNDRILLED VERSIONS, USE D MIN. = N MAX. + Z MIN.
 - "X", "W-RT", "W-VT", "U", & "L" DIE SETS ARE COLOR CODED. "A", "B", AND "C" DIES ARE NOT COLOR CODED. NESTS AND INDENTOR TYPE ARE NOT COLOR CODED.



TO ORDER BURNDY® PRODUCTS CALL
 UNITED STATES
 1-800-346-4175 (LONDONDERRY, NH)
 CANADA:
 1-800-361-6975 (QUEBEC)
 1-800-387-6487 (ALL OTHER PROVINCES)
 FOR PRODUCT INFO: <http://www.burndy.com>

HYLUG™	
ITEM NO:	N/A
CAT. NO:	YA-, YA-N & YA -TC- (TABLE)
DRAWN BY:	C RACANO 6/15/77
CHECKER:	CAR 6/15/77
DSN APPVL:	LB 6/24/77
MFG APPVL:	--
QC APPVL:	C ACKERMAN 9/9/94
MKT APPVL:	T NELSON 9/7/94
PROD FAM:	--
PROJECT #:	--
DOCUMENT TYPE:	Sales
REL LEVEL:	Released
DRAWING NO	SD079849
REV	E
SCALE:	NTS
SIZE	D
SHEET 3 OF 10	

REFERENCE: SE209241 (YA-2, YA-4)

REV: PEO200

CATALOG NUMBER	STRANDED COPPER CONDUCTOR ACCOMMODATED			BOLT SIZE	METRIC BOLT SIZE	DIMENSIONS							
	CODE (AWG)	NAVY	METRIC SIZE (CLASS 2)			B	C	K DIA.	L	N	O.D.	T REF.	Z MIN.
YA4CTC10	#4 AWG	40	-----	#10	M5	1.12 [28]	.50 [13]	.21 [5]	1.94 [49]	.25 [6]	.34 [9]	.09 [2]	.27 [7]
YA4C				1/4	M6	.50 [13]	.27 [7]	1.87 [47]	.25 [6]	.09 [2]	.25 [6]		
YA4CTC38				3/8	-----	.58 [15]	.40 [10]	2.25 [57]	.41 [10]	.08 [2]	.42 [11]		
YA4CN				1/2	M12	1.12 [28]	.83 [21]	.56 [14]	2.69 [68]	.63 [16]	.12 [3]	.64 [16]	
YA3CTC14	#3 AWG #2 SOL	50	25mm ² STR [6.6]	1/4	M6	1.25 [32]	.55 [14]	.27 [7]	2.23 [57]	.31 [8]	.38 [10]	.09 [2]	.33 [8]
YA3C				5/16	-----	.55 [14]	.33 [8]	2.30 [58]	.34 [9]	.09 [2]	.36 [9]		
YA3CTC38				3/8	-----	.58 [15]	.40 [10]	2.42 [61]	.41 [10]	.08 [2]	.42 [11]		
YA3CN				1/2	M12	1.25 [32]	.83 [21]	.56 [14]	2.86 [73]	.63 [16]	.12 [3]	.64 [16]	
YA4CU	#4 AWG	40	-----	-----	-----	1.12 [28]	.49 [12]	-----	2.00 [51]	.25 [6]	.34 [9]	.08 [2]	.25 [6]

CONNECTOR SIZE	TOLERANCES					
	B	C	K DIA.	L	N	O.D.
-8C THRU -25	±.06	+ .04 - .02	±.02	±.09	±.03	±.01
-26 THRU -34	±.08	+ .04 - .06	±.02	±.12	±.03	±.01
-35 AND UP	±.09	±.06	±.02	±.15	±.06	±.01

TOLERANCE BLOCK

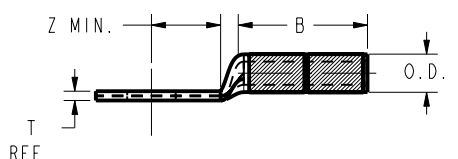
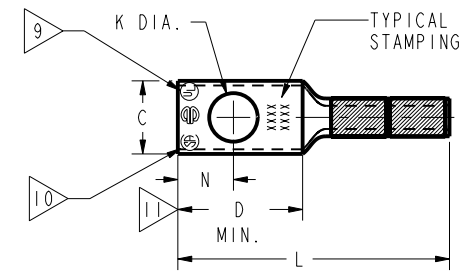
INSTALLATION TOOLING (# CRIMPS)

CATALOG NO.	COLOR CODE	DIE INFORMATION		MECHANICAL				HYDRAULIC						DIELESS (# CRIMPS)		WIRE STRIP LENGTH	
		DIE INDEX	TYPE	YIMRTC	OUR840	MD6 MD7	MD6--R2 MD7-34R	PATMD6 PAT600 Y500CT	Y34A Y34B Y34BH	Y35, Y39 Y750, PAT750	Y46 PAT46	Y45	Y48B	Y60BHU	MECHANICAL		HYDRAULIC
YA4CTC10 YA4C YA4CTC38 YA4CN	GRAY	8 346	GRAY DIE SET	GRAY (4)	X4CRT(2)	W4CRT(2) W4CVT(2)	W4CRT(2) W4CVT(2)	W4CRT(2) W4CVT(2)	-----	U4CRT(2) U6CABT(2)	U4CRT(2) U6CABT(2)	U4CRT(2) U6CABT(2)	-----	-----	MY29-3(2) MY29-11(2) MRC840(2)	PAT81KFT(1) Y81KFT(1) PAT4PC834(1) Y4PC834(1) PAT644(1) Y644(1)	1-3/16"
YA3CTC14 YA3C YA3CTC38 YA3CN	WHITE	9	WHITE DIE SET	WHITE (4)	W3CRT(2)	W3CRT(2)	W3CRT(2)	W3CRT(2)	-----	U3CRT(2)	U3CRT(2)	U3CRT(2)	-----	-----	MY29-3(2) MY29-11(2)	PAT81KFT(2) Y81KFT(2) PAT4PC834(2) Y4PC834(2) PAT644(1) Y644(1)	1-5/16"

NOTES:

- MATERIAL : COPPER TUBING.
- FINISH: ELECTRO-TIN PLATED.
- CATALOG # PT6515 ADAPTOR IS REQUIRED TO USE "U" DIES IN Y45 SERIES TOOLS.
- CATALOG # PUADP-1 ADAPTOR IS REQUIRED TO USE "U" DIES IN Y46 SERIES TOOLS.
- Y35P3 INDENTOR ADAPTOR REQUIRED FOR Y34PR INDENTOR.
- PERMANENT DIE IN TOOLING.
- DIMENSIONS IN BRACKETS [] ARE IN MILLIMETERS ROUNDED OFF TO THE NEAREST MILLIMETER, UNLESS OTHERWISE NOTED, AND ARE FOR REFERENCE ONLY.
- FOR USE BY CUSTOMERS THAT HAVE THIS HYPRESS™ NO NEW Y34A HYPRESS™ TOOLS ARE BEING PROCESSED. Y34A USES A--D NEST DIES ONLY.
- CONNECTORS ARE UL LISTED; UNDRILLED VERSIONS ARE NOT UL LISTED.
- CONNECTORS ARE CSA CERTIFIED; UNDRILLED VERSIONS ARE NOT CSA CERTIFIED.
- FOR ALL OTHER UNDRILLED VERSIONS ADD SUFFIX "U" TO END OF CATALOG NUMBER. FOR ALL OTHER UNDRILLED VERSIONS, USE D MIN. = N MAX. + Z MIN.
- "X", "W-RT", "W-VT", "U", & "L" DIE SETS ARE COLOR CODED. "A", "B", AND "C" DIES ARE NOT COLOR CODED. NESTS AND INDENTOR TYPE ARE NOT COLOR CODED.

- 13 FOR OIL TIGHT SEALED VERSIONS AND SUFFIX "DT" OR "DTS" TO CATALOG NUMBER.
- 14 YA4CDT AND YA4CDTS ARE THE SAME DIMENSIONALLY AS THE YA4CU BUT USES THE "K DIA"



REFERENCE: SD17179 (YA-2, YA-4)
SE209241

TO ORDER BURNDY® PRODUCTS CALL		HYLUG™	
UNITED STATES 1-800-346-4175 (LONDONDERRY, NH)		ITEM NO: N/A	CAT. NO: YA4C- (TABLE)
CANADA: 1-800-361-6975 (QUEBEC) 1-800-387-6487 (ALL OTHER PROVINCES)		DRAWN BY: C.RACANO 8/16/77	CHECKER: CAR 6/16/77
FOR PRODUCT INFO: http://www.burndy.com		DSN APPVL: LB 6/24/77	MFG APPVL: N/A
		QC APPVL: C.ACKERMAN 9/08/94	MKT APPVL: T.NELSON 9/7/94
		PROJ #:	SCALE: NTS
		SIZE: D	DRAWING NO: SD079849
		REL LEVEL: Released	REV: D
		SHEET 2 OF 10	

REV: PE0200

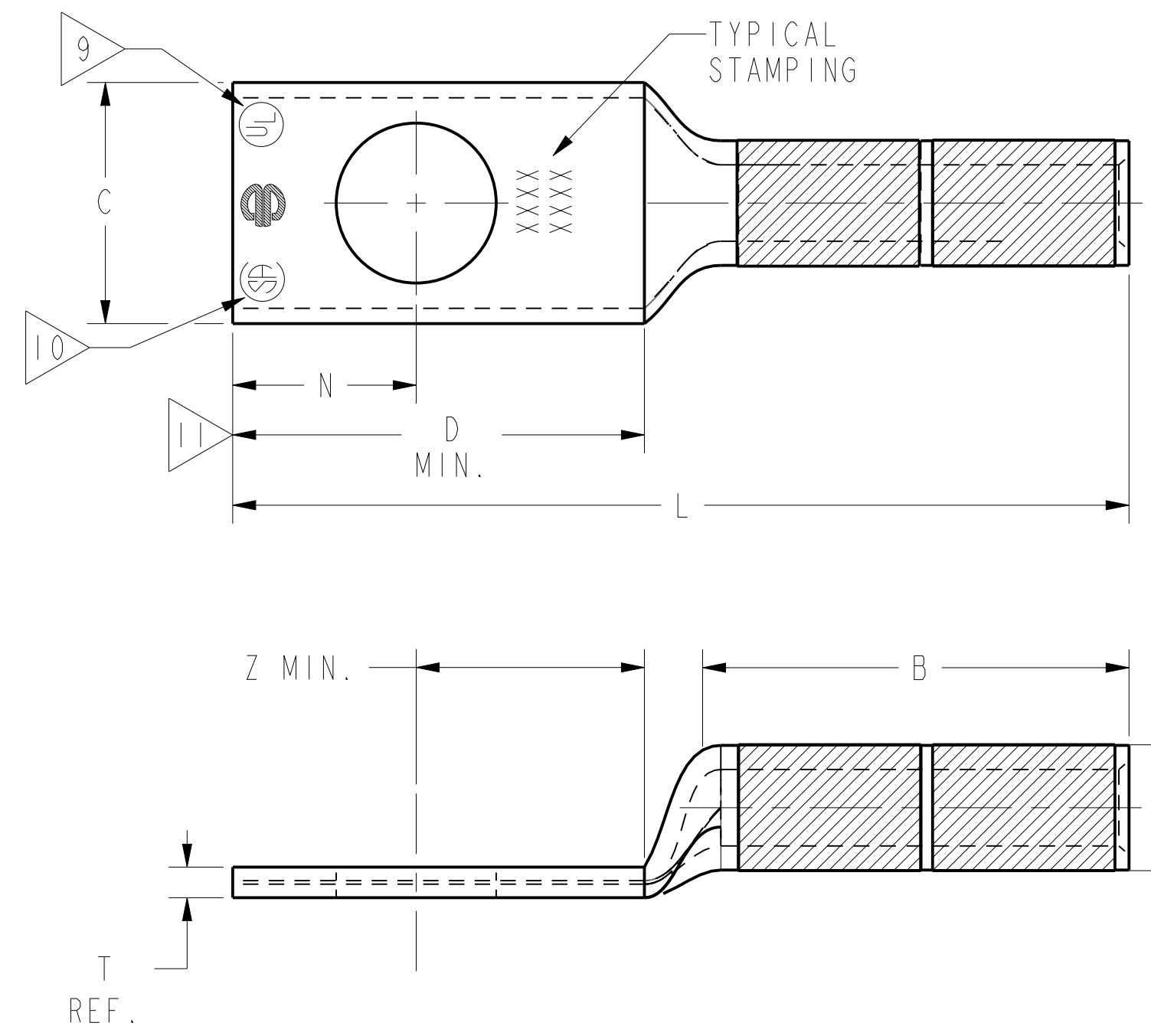
CATALOG NUMBER	STRANDED COPPER CONDUCTOR ACCOMMODATED			BOLT SIZE	METRIC BOLT SIZE	DIMENSIONS							
	CODE (AWG)	NAVY	METRIC SIZE (CLASS 2)			B	C	K DIA.	L	N	O.D.	T REF.	Z MIN.
YA8CTC10	#8 AWG	23	10mm ² STR [4.2]	#10	M5	.81 [21]	.41 [10]	.21 [5]	1.57 [40]	.25 [6]	.27 [7]	.08 [2]	.27 [7]
YA8CTC14				1/4	M6	.81 [21]	.44 [11]	.27 [7]	1.69 [43]	.31 [8]	.27 [7]	.08 [2]	.33 [8]
YA8CTC38				3/8	M10	.81 [21]	.58 [15]	.40 [10]	1.88 [48]	.41 [10]	.27 [7]	.06 [2]	.42 [11]
YA8CN				1/2	M12	.81 [21]	.83 [21]	.56 [14]	2.32 [59]	.63 [16]	.27 [7]	.12 [3]	.64 [16]
YA6CTC8	#6 STR #6 SOL	-----	-----	#8	----	.42 [11]	.18 [5]	.18 [5]	1.83 [46]	.22 [6]	.29 [7]	.09 [2]	.23 [6]
YA6CTC10				#10	M5	.42 [11]	.21 [5]	.18 [5]	1.89 [48]	.25 [6]	.29 [7]	.09 [2]	.27 [7]
YA6C				1/4	M6	.41 [10]	.27 [7]	.27 [7]	1.81 [46]	.25 [6]	.29 [7]	.09 [2]	.19 [5]
YA6CN				1/2	M12	.83 [21]	.56 [14]	.63 [16]	2.64 [67]	.63 [16]	.29 [7]	.12 [3]	.64 [16]
YA5C	#5 AWG	30	5/8 16mm ² STR [5.3]	1/4	M6	.44 [11]	.27 [7]	.27 [7]	1.98 [50]	.25 [6]	.30 [8]	.07 [2]	.33 [8]
YA5CN				1/2	M12	.83 [21]	.56 [14]	.63 [16]	2.67 [68]	.63 [16]	.30 [8]	.12 [3]	.64 [16]
YA6CU	#6 STR/SOL	-----	-----	----	----	.45 [11]	-----	-----	1.96 [50]	.25 [6]	.29 [7]	.08 [2]	.33 [8]
YA6CTC58	#6 STR/SOL	-----	-----	5/8	M16	.91 [23]	.69 [18]	.66 [17]	3.00 [76]	.66 [17]	.29 [7]	.14 [4]	.67 [17]
YA6CTC516	#6 STR/SOL	-----	-----	5/16	M8	.52 [13]	.33 [8]	.34 [9]	2.08 [53]	.34 [9]	.29 [7]	.07 [2]	.36 [9]
YA6CTC38	#6 STR/SOL	-----	-----	3/8	M10	.58 [15]	.41 [10]	.41 [10]	2.21 [56]	.41 [10]	.29 [7]	.06 [2]	.42 [11]

CONNECTOR SIZE	TOLERANCES					
	B	C	K DIA.	L	N	O.D.
-8C THRU -25	±.06	±.04	±.02	±.09	±.03	±.01
-26 THRU -34	±.08	+ .04 - .06	±.02	±.12	±.03	±.01
-35 AND UP	±.09	±.06	±.02	±.15	±.06	±.01

TOLERANCE BLOCK

CATALOG NO.	COLOR CODE	DIE INFORMATION		MECHANICAL				HYDRAULIC					DIELESS (# CRIMPS)		WIRE STRIP LENGTH		
		DIE INDEX	TYPE	OUR840	MD6 MD7	MD6--R2 MD7-34R	PATMD6 PAT600 Y500CT	Y34A Y34B Y34BH	Y35, Y39 Y750, PAT750	Y46, PAT46	Y45	Y48B	Y60BHU	MECHANICAL		HYDRAULIC	
YA8CTC10 YA8CTC14 YA8CTC38 YA8CN	RED	49	RED DIE SET NEST INDENTOR	RED (2)	X8CRT(2)	W8CVT(2) W8CRT(2)	W8CVT(2) W8CRT(2)	W8CVT(2) W8CRT(2)	-----	U8CRT(2)	U8CRT(2)	U8CRT(2)	-----	-----	Y8MRB-1(2) MY29-3(2) MY29-11(2) MRC840(2)	PAT81KFT(1) Y81KFT(1) PAT4PC834(1) Y4PC834(1)	7/8"
YA6C- YA5C- SERIES	BLUE	7 374	BLUE DIE SET NEST INDENTOR	BLUE(2)	X5CRT(2)	W5CRT(2) W5CVT(2)	W5CRT(2) W5CVT(2)	W5CRT(2) W5CVT(2)	----- B6CD(1) A6CD(1) Y34PR	U5CRT(2) U8CABT(2) U6CD-1(1) Y34PR	U5CRT(2) U8CABT(2) U6CD-1(1) Y34PR	U5CRT(2) U8CABT(2) U6CD-1(1) Y34PR	-----	-----	MY29-3(2) MY29-11(2) MRC840(2)	PAT81KFT(1) Y81KFT(1) PAT4PC834(1) Y4PC834(1) PAT644(1) Y644(1)	1-3/16"

- NOTES:
- MATERIAL : COPPER TUBING.
 - FINISH: TIN PLATED.
 - CATALOG # PT6515 ADAPTOR IS REQUIRED TO USE "U" DIES IN Y45 SERIES TOOLS.
 - CATALOG # PUADP-1 ADAPTOR IS REQUIRED TO USE "U" DIES IN Y46 SERIES TOOLS.
 - Y35P3 INDENTOR ADAPTOR REQUIRED FOR Y34PR INDENTOR.
 - PERMANENT DIE IN TOOLING.
 - DIMENSIONS IN BRACKETS [] ARE IN MILLIMETERS ROUNDED OFF TO THE NEAREST MILLIMETER, UNLESS OTHERWISE NOTED, AND ARE FOR REFERENCE ONLY.
 - FOR USE BY CUSTOMERS THAT HAVE THIS HYPRESS™. NO NEW Y34A HYPRESS™ TOOLS ARE BEING PROCESSED. Y34A USES A--D NEST DIES ONLY.
 - CONNECTORS ARE UL LISTED; UNDRILLED VERSIONS ARE NOT UL LISTED.
 - CONNECTORS ARE CSA CERTIFIED; UNDRILLED VERSIONS ARE NOT CSA CERTIFIED.
 - FOR ALL OTHER UNDRILLED VERSIONS ADD SUFFIX "U" TO END OF CATALOG NUMBER. FOR ALL OTHER UNDRILLED VERSIONS. USE D MIN. = N MAX. + Z MIN.
 - "X", "W-RT", "W-VT", "U", & "L" DIE SETS ARE COLOR CODED. "A", "B", AND "C" DIES ARE NOT COLOR CODED. NESTS AND INDENTOR TYPE ARE NOT COLOR CODED.
 - X8CABT & U8CABT DIES USED ON YA6C-- HYLUG NOT YA5C-- HYLUG.
 - FOR OIL TIGHT SEALED VERSIONS AND SUFFIX "DT" OR "DTS" TO CATALOG NUMBER.
 - YA6CDT AND YA6CDTS ARE THE SAME DIMENSIONALLY AS THE YA6CU BUT USES THE "K DIA" FROM THE YA6C.



16 FOR '8C' & '6C' SIZES ONLY.
17 DO NOT USE PAT644 OR Y644 TOOLING WITH 6 AWG SOL.

REFERENCE: SD17179 (YA-2, YA-4)
SE209241

TO ORDER BURNDY® PRODUCTS CALL UNITED STATES 1-800-346-4175 (LONDONDERRY, NH) CANADA: 1-800-361-6975 (QUEBEC) 1-800-387-6487 (ALL OTHER PROVINCES) FOR PRODUCT INFO: http://www.burndy.com	HYLUG™	
	ITEM NO:	N/A
	CAT. NO:	YA-, YA-N, YA-TC- (TABLE)
	DRAWN BY:	C RACCANO 11/29/76
	CHECKER:	CAR 12/10/76
	DSN APPVL:	LB 12/10/76
	MFG APPVL:	--
	QC APPVL:	C ACKERMAN 9/9/94
	MKT APPVL:	T NELSON 9/7/94
	SCALE:	NTS
PROJECT #:	SD079849	
DOCUMENT TYPE:	Sales	
REL LEVEL:	Released	

REV	DATE	DESCRIPTION	ECO	BY	CHK.
F	10/05/2014 00:00:00 AM	ADDED CATALOG NUMBER YA28TC14	38025	AS	MB

CATALOG NUMBER	STRANDED COPPER CONDUCTOR ACCOMMODATED			BOLT SIZE	METRIC BOLT SIZE	DIMENSIONS							
	CODE (AWG)	NAVY	METRIC SIZE (CLASS 2)			B	C	K DIA.	L	N	O.D.	T REF.	Z MIN.
YA26	2/0 AWG	125	70mm ² STR [11]	3/8	M10	1.50 [38]	.83 [21]	.40 [10]	2.77 [70]	.41 [10]	.56 [14]	.12 [3]	.42 [11]
YA26N				1/2	M12		.83 [21]	.56 [14]	3.21 [82]	.63 [16]	.56 [14]	.12 [3]	.64 [16]
YA26TC14				1/4	M6		.83 [21]	.27 [7]	2.58 [66]	.31 [8]	.56 [14]	.12 [3]	.32 [8]
YA26TC516				5/16	M8		.83 [21]	.33 [8]	2.65 [67]	.34 [9]	.56 [14]	.12 [3]	.35 [9]
YA27	3/0 AWG	150	-----	1/2	M12	1.50 [38]	.91 [23]	.53 [13]	3.06 [78]	.53 [13]	.62 [16]	.13 [3]	.55 [14]
YA27N				1/2	M12		.91 [23]	.56 [14]	3.25 [82]	.63 [16]	.62 [16]	.13 [3]	.64 [16]
YA28TC14	4/0 AWG	200	-----	1/4	M6	1.62 [41]	1.02 [26]	.27 [7]	2.79 [71]	.31 [8]	.69 [18]	.14 [4]	.33 [8]
YA28TC38				3/8	M10	1.62 [41]	1.02 [26]	.40 [10]	2.98 [76]	.41 [10]	.69 [18]	.14 [4]	.42 [11]
YA28				1/2	M12	1.62 [41]	1.02 [26]	.53 [13]	3.23 [82]	.53 [13]	.69 [18]	.14 [4]	.55 [14]
YA28N				1/2	M12	1.62 [41]	1.02 [26]	.56 [14]	3.41 [87]	.63 [16]	.69 [18]	.14 [4]	.64 [16]

CONNECTOR SIZE	TOLERANCES					
	B	C	K DIA.	L	N	O.D.
-8C THRU -25	±.06	±.04	±.02	±.09	±.03	±.01
-26 THRU -34	±.08	±.04 -.06	±.02	±.12	±.03	±.01
-35 AND UP	±.09	±.06	±.02	±.15	±.06	±.01

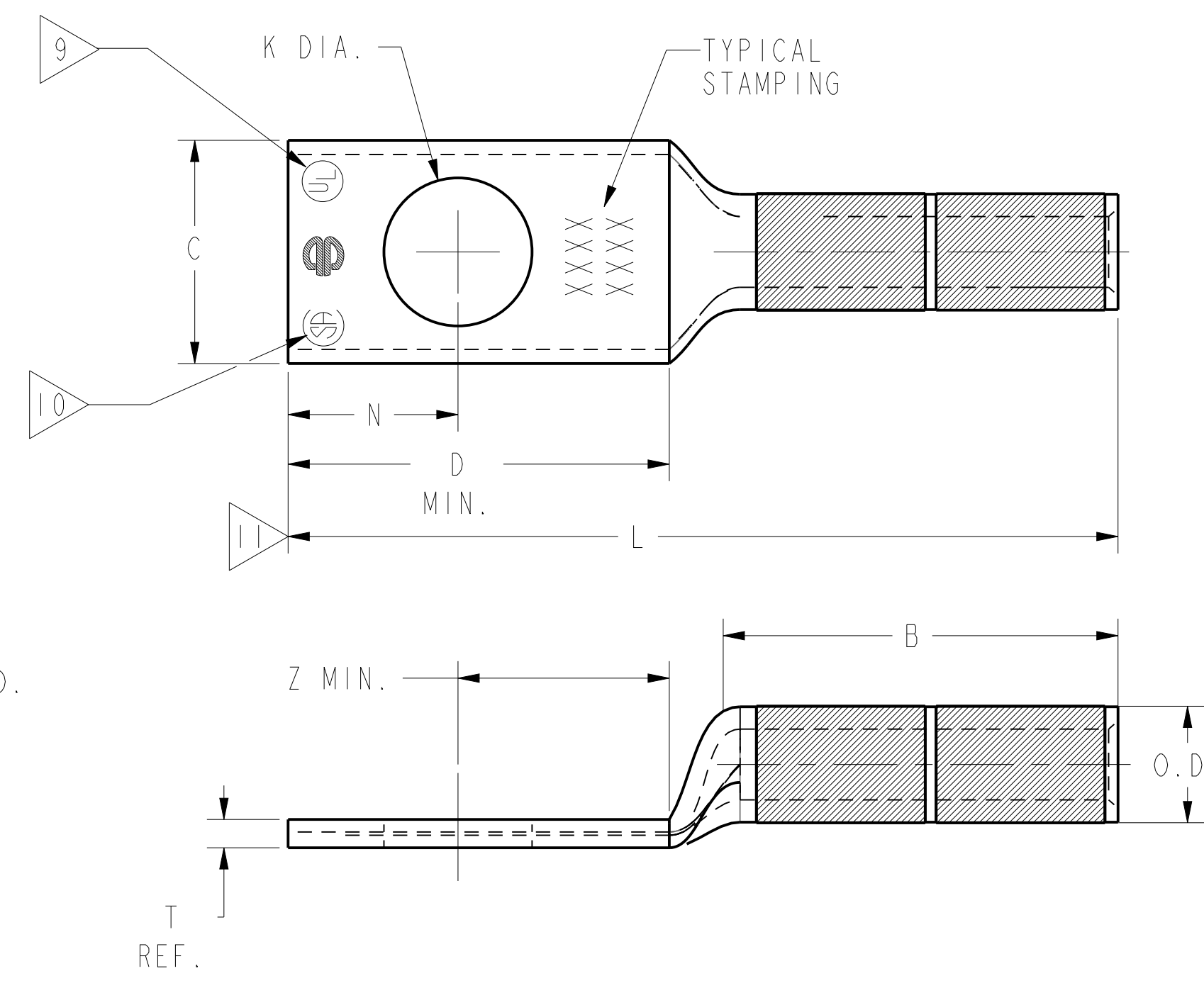
TOLERANCE BLOCK

INSTALLATION TOOLING (# CRIMPS)

CATALOG NO.	COLOR CODE	DIE INFORMATION		MECHANICAL				HYDRAULIC					DIELESS (# CRIMPS)	WIRE STRIP LENGTH		
		DIE INDEX	TYPE	YIMRTC 6	OUR840	MD6 MD7	MD6--R2 MD7-34R	PATMD6 PAT600 Y500CT	Y34A Y34B Y34BH 8 5	Y35, Y39 Y750, PAT750 5	Y46, PAT46 4 5	Y45 3 5			Y48B	Y60BHU
YA26 YA26N YA26TC14 YA26TC516	BLACK	13	BLACK DIE SET NEST INDENTOR	-----	X26RT(4)	W26RT(4) W26VT(4)	W26RT(4) W26VT(4)	W26RT(4) W26VT(4)	-----	U26RT(2)	U26RT(2)	U26RT(2)	-----	-----	MECHANICAL: MY29-3(2) MY29-11(2) MRC840(4)	1-9/16"
YA27 YA27N	ORANGE	14	ORANGE DIE SET NEST INDENTOR	-----	X27RT(6)	W27RT(4) W27VT(4)	W27RT(4) W27VT(4)	W27RT(4) W27VT(4)	-----	U27RT(2)	U27RT(2)	U27RT(2)	-----	-----	HYDRAULIC: PAT81KFT(2) Y81KFT(2) PAT4PC834(2) Y4PC834(2) PAT644(1) Y644(1)	1-9/16"
YA28TC14 YA28TC38 YA28 YA28N	PURPLE	15	PURPLE DIE SET NEST INDENTOR	-----	X28RT(6)	W28RT(4) W28VT(4)	W28RT(4) W28VT(4)	W28RT(4) W28VT(4)	-----	U28RT(2)	U28RT(2)	U28RT(2)	C28R (2) L28RT (1)	-----	-----	1-11/16"

NOTES:

- MATERIAL : COPPER TUBING.
- FINISH: ELECTRO-TIN PLATED.
- CATALOG # PT6515 ADAPTOR IS REQUIRED TO USE "U" DIES IN Y45 SERIES TOOLS.
- CATALOG # PUADP-1 ADAPTOR IS REQUIRED TO USE "U" DIES IN Y46 SERIES TOOLS.
- Y35P3 INDENTOR ADAPTOR REQUIRED FOR Y34PR INDENTOR.
- PERMANENT DIE IN TOOLING.
- DIMENSIONS IN BRACKETS [] ARE IN MILLIMETERS ROUNDED OFF TO THE NEAREST MILLIMETER, UNLESS OTHERWISE NOTED, AND ARE FOR REFERENCE ONLY.
- FOR USE BY CUSTOMERS THAT HAVE THIS HYPRESS™. NO NEW Y34A HYPRESSES™ ARE BEING PROCESSED. Y34A USES A--D NEST DIES ONLY.
- CONNECTORS ARE UL LISTED; UNDRILLED VERSIONS ARE NOT UL LISTED.
- CONNECTORS ARE CSA CERTIFIED; UNDRILLED VERSIONS ARE NOT CSA CERTIFIED.
- FOR UNDRILLED VERSIONS ADD SUFFIX "U" TO END OF CATALOG NUMBER. FOR UNDRILLED VERSIONS, USE D MIN. = N MAX. + Z MIN.
- "X", "W-RT", "W-VT", "U", & "L" DIE SETS ARE COLOR CODED. "A", "B", AND "C" DIES ARE NOT COLOR CODED. NESTS AND INDENTOR TYPE ARE NOT COLOR CODED.
- FOR NICKEL PLATING ADD SUFFIX "NK" TO THE CATALOG NUMBER. NICKEL PLATED VERSIONS ARE UL & CSA LISTED.



REFERENCE: SD17179, (YA-2, YA-4) SE209241

TO ORDER BURNDY® PRODUCTS CALL
 UNITED STATES
 1-800-346-4175 (LONDONDERRY, NH)
 CANADA:
 1-800-361-6975 (QUEBEC)
 1-800-387-6487 (ALL OTHER PROVINCES)
 FOR PRODUCT INFO: <http://www.burndy.com>

HYLUG™	
ITEM NO:	N/A
CAT. NO:	YA-, YA-N, YA-TC-
DRAWN BY:	C. RACANO 6/16/77
CHECKER:	CAR 6/16/77
DSN APPVL:	R ROMAN 10/11/14
MFG APPVL:	N/A --
QA APPVL:	C KOWALCZYK 10/22/14
MKT APPVL:	K BOUTIN 10/8/14
PROD FAM:	--
PROJECT #:	DO 37810
DOCUMENT TYPE:	Sales
REL LEVEL:	Released

BURNDY

SCALE: NTS
 DRAWING NO: SD079849
 SHEET 4 OF 10

REV: PE0200

CATALOG NUMBER	STRANDED COPPER CONDUCTOR ACCOMMODATED			BOLT SIZE	METRIC BOLT SIZE	DIMENSIONS							
	CODE (AWG)	NAVY	METRIC SIZE (CLASS 2)			B	C	K DIA.	L	N	O.D.	T REF.	Z MIN.
YA29	250 kcmil	250	120mm ² STR [14.5]	1/2	M12	1.62 [41]	1.11 [28]	.53 [13]	3.26 [83]	.53 [13]	.75 [19]	.16 [4]	.55 [14]
YA29N				1/2	M12	1.62 [41]	1.11 [28]	.56 [14]	3.45 [88]	.63 [16]	.75 [19]	.16 [4]	.64 [16]
YA29TC38				3/8	--	1.62 [41]	1.10 [28]	.40 [10]	3.01 [76]	.41 [10]	.75 [19]	.16 [4]	.42 [11]
YA30	300 kcmil	300	150mm ² STR [16.2]	1/2	M12	2.00 [51]	1.20 [30]	.53 [13]	3.69 [94]	.53 [13]	.81 [21]	.16 [4]	.55 [14]
YA30N				1/2	M12	1.20 [30]	.58 [14]	3.88 [99]	.63 [16]	.81 [21]	.16 [4]	.64 [16]	
YA31	350 kcmil	350	-----	1/2	M12	2.00 [51]	1.29 [31]	.53 [13]	3.73 [95]	.53 [13]	.88 [22]	.18 [4]	.55 [14]
YA31N				1/2	M12	1.29 [31]	.56 [14]	3.92 [99]	.63 [16]	.88 [22]	.18 [4]	.64 [16]	

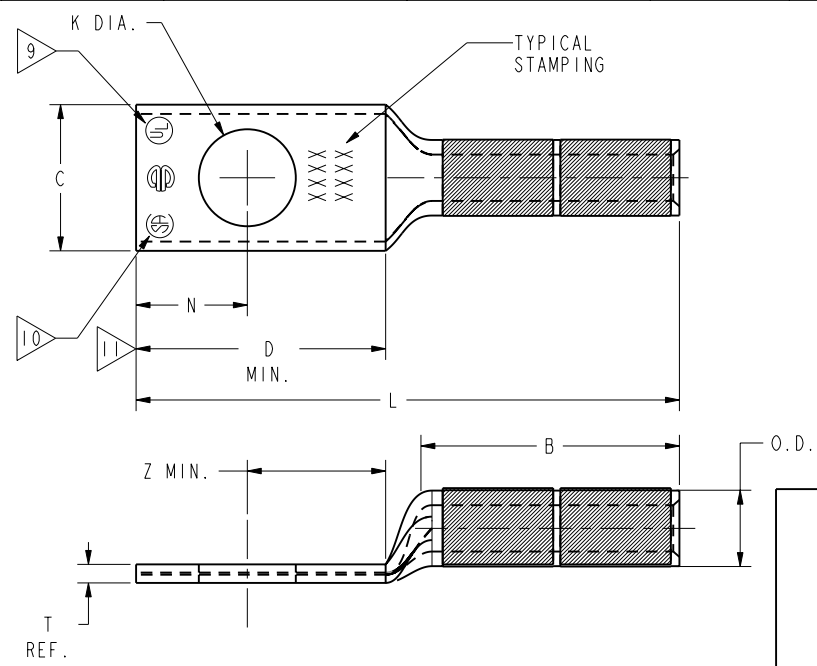
CONNECTOR SIZE	TOLERANCES					
	B	C	K DIA.	L	N	O.D.
-8C THRU -25	±.06	+ .04 - .02	±.02	±.09	±.03	±.01
-26 THRU -34	±.08	+ .04 - .06	±.02	±.12	±.03	±.01
-35 AND UP	±.09	±.06	±.02	±.15	±.06	±.01

TOLERANCE BLOCK

CATALOG NO.	COLOR CODE	DIE INFORMATION		MECHANICAL				HYDRAULIC						DIELESS (# CRIMPS)		WIRE STRIP LENGTH	
		DIE INDEX	TYPE	YIMRTC	OUR840	MD6 MD7	MD6--R2 MD7-34R	PATMD6 PAT600 Y500CT	Y34A Y34B Y34BH	Y35, Y39 Y750, PAT750	Y46, PAT46	Y45	Y48B	Y60BHU	MECHANICAL		HYDRAULIC
YA29 YA29N YA29TC38	YELLOW	16	YELLOW DIE SET	-----	X29RT(8)	W29VT(4)	W29RT(4) W29VT(4)	W29VT(4)	A29R(2)	U29RT(2)	U29RT(2)	U29RT(2)	C29R(2)	L29RT(1)	MY29-3(2) MY29-11(2)	PAT81KFT(2) Y81KFT(2) PAT4PC834(2) Y4PC834(2) PAT644(1) Y644(1)	1-11/16"
YA30 YA30N	WHITE	17 298	WHITE DIE SET	-----	-----	-----	W30RT(4)	W30VT(4)	A2BAR(2)	U30RT(4) U28ART(4)	U30RT(4) U28ART(4)	U30RT(4) U28ART(4)	C30R(1) C28AR(1)	L30RT(1)	-----	PAT81KFT(3) Y81KFT(3) PAT4PC834(3) Y4PC834(3) PAT644(1) Y644(1)	2-1/16"
YA31 YA31N	RED	18 324	RED DIE SET	-----	-----	-----	W31RT(4) W31VT(4)	W31VT(4)	-----	U31RT(4) U29ART(4)	U31RT(4) U29ART(4)	U31RT(4) U29ART(4)	C31R(1) C29AR(1)	L31RT(1) L29ART(1)	-----	-----	2-1/16"
			NEST INDENTOR	-----	-----	-----	-----	-----	B29D(2) A29D(2) Y34PR	U29D-1(2) Y34PR	U29D-1(2) Y34PR	U29D-1(2) Y34PR	C29D(1) Y48PR	-----			
			NEST INDENTOR	-----	-----	-----	-----	-----	B30D(2) A30D(2) Y34PR	U30D-1(2) Y34PR	U30D-1(2) Y34PR	U30D-1(2) Y34PR	C30D(2) Y48PR	-----			
			NEST INDENTOR	-----	-----	-----	-----	-----	B31D(2) A31D(2) Y34PR	U31D-1(2) Y34PR	U31D-1(2) Y34PR	U31D-1(2) Y34PR	C31D(1) Y48PR	-----			

NOTES:

- MATERIAL : COPPER TUBING.
- FINISH: ELECTRO-TIN PLATED.
- CATALOG # PT6515 ADAPTOR IS REQUIRED TO USE "U" DIES IN Y45 SERIES TOOLS.
- CATALOG # PUADP-1 ADAPTOR IS REQUIRED TO USE "U" DIES IN Y46 SERIES TOOLS.
- Y35P3 INDENTOR ADAPTOR REQUIRED FOR Y34PR INDENTOR.
- PERMANENT DIE IN TOOLING.
- DIMENSIONS IN BRACKETS [] ARE IN MILLIMETERS ROUNDED OFF TO THE NEAREST MILLIMETER, UNLESS OTHERWISE NOTED, AND ARE FOR REFERENCE ONLY.
- FOR USE BY CUSTOMERS THAT HAVE THIS HYPRESS™ NO NEW Y34A HYPRESSES™ ARE BEING PROCESSED. Y34A USES A--D NEST DIES ONLY.
- CONNECTORS ARE UL LISTED; UNDRILLED VERSIONS ARE NOT UL LISTED.
- CONNECTORS ARE CSA CERTIFIED; UNDRILLED VERSIONS ARE NOT CSA CERTIFIED.
- FOR UNDRILLED VERSIONS ADD SUFFIX "U" TO END OF CATALOG NUMBER. FOR UNDRILLED VERSIONS, USE D MIN. = N MAX. + Z MIN.
- "X", "W-RT", "W-VT", "U", & "L" DIE SETS ARE COLOR CODED. "A", "B", AND "C" DIES ARE NOT COLOR CODED. NESTS AND INDENTOR TYPE ARE NOT COLOR CODED.



REFERENCE: SD17179, (YA-2, YA-4)
SE209241

TO ORDER BURNDY® PRODUCTS CALL		HYLUG™	
UNITED STATES 1-800-346-4175 (LONDONDERRY, NH)		ITEM NO: N/A	CAT. NO: YA-, YA-N, YA-TC- (TABLE)
CANADA: 1-800-361-6975 (QUEBEC) 1-800-387-6487 (ALL OTHER PROVINCES)		DRAWN BY: C.RACANO 6/15/77	CHECKER: CAR 6/16/77
FOR PRODUCT INFO: http://www.burndy.com		DSN APPVL: LB 6/24/77	MFG APPVL: N/A
		QC APPVL: C.ACKERMAN 9/9/94	MKT APPVL: T.NELSON 9/07/94
		PROJ #:	SCALE: NTS
		SIZE: D	DRAWING NO: SD079849
		DOCUMENT TYPE: Sales	REV: B
		REL LEVEL: Released	SHEET 5 OF 10

REV: PE0200

CATALOG NUMBER	STRANDED COPPER CONDUCTOR ACCOMMODATED			BOLT SIZE	METRIC BOLT SIZE	DIMENSIONS							
	CODE (AWG)	NAVY	METRIC SIZE (CLASS 2)			B	C	K DIA.	L	N	O.D.	T REF.	Z MIN.
YA32	400 kcmil	400	---	5/8	M16	2.12 [54]	1.40 [36]	.69 [17]	4.15 [105]	.66 [17]	.95 [24]	.19 [5]	.67 [17]
YA32N				1/2	M12	2.12 [54]	1.40 [36]	.56 [14]	4.09 [104]	.63 [16]	.95 [24]	.19 [5]	.64 [16]
YA33	450 kcmil	---	---	5/8	M16	2.13 [54]	1.48 [38]	.69 [17]	4.24 [108]	.66 [17]	1.01 [26]	.21 [5]	.67 [17]
YA33N				1/2	M12	2.13 [54]	1.48 [38]	.56 [14]	4.17 [106]	.63 [16]	1.01 [26]	.21 [5]	.64 [16]
YA34	500 kcmil	---	240mm ² STR [23.1]	5/8	M16	2.25 [57]	1.55 [39]	.69 [17]	4.39 [111]	.66 [17]	1.06 [27]	.23 [6]	.67 [17]
YA34N				1/2	M12	2.25 [57]	1.55 [39]	.56 [14]	4.32 [110]	.63 [16]	1.06 [27]	.23 [6]	.64 [16]

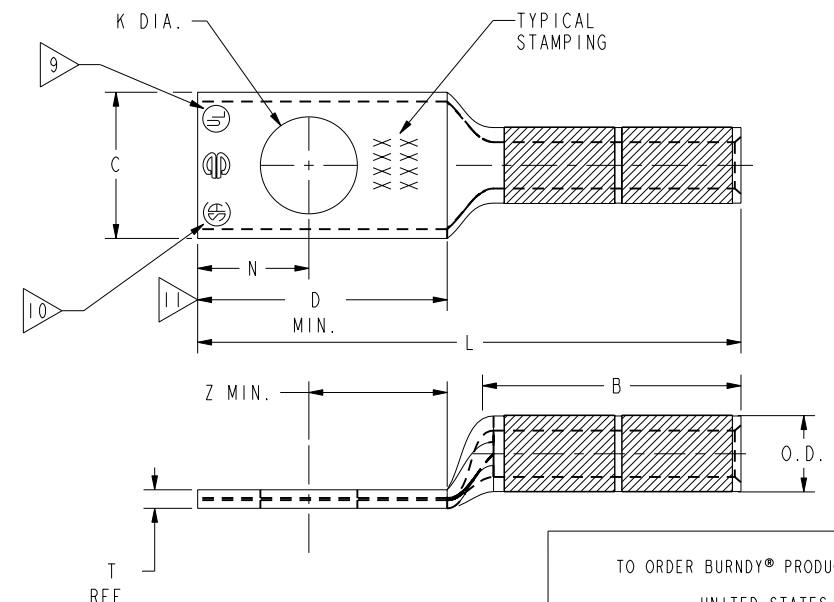
CONNECTOR SIZE	TOLERANCES					
	B	C	K DIA.	L	N	O.D.
-8C THRU -25	±.06	+ .04 - .02	±.02	±.09	±.03	±.01
-26 THRU -34	±.08	+ .04 - .06	±.02	±.12	±.03	±.01
-35 AND UP	±.09	±.06	±.02	±.15	±.06	±.01

TOLERANCE BLOCK

CATALOG NO.	COLOR CODE	DIE INFORMATION		MECHANICAL				HYDRAULIC						DIELESS (# CRIMPS) HYDRAULIC	WIRE STRIP LENGTH	
		DIE INDEX	TYPE	YIMRTC	OUR840	MD6 MD7	MD6--R2 MD7-34R	PATMD6 PAT600 Y500CT	Y34A Y34B Y34BH	Y35, Y39 Y750, PAT750	Y46, PAT46	Y45	Y48B			Y60BHU
YA32 YA32N	BLUE	19 470	BLUE DIE SET NEST INDENTOR	----	----	----	W32RT(4) W32VT(4)	W32VT(4)	----	U32RT(4) U30ART(4)	U32RT(4) U30ART(4)	U32RT(4) U30ART(4)	C32R(1) C30AR(1)	L32RT(1) L30ART(1)	PAT81KFT(3) Y81KFT(3) PAT4PC834(3) Y4PC834(3) PAT644(1) Y644(1)	2-3/16"
YA33 YA33N	GRAY	326 538	GRAY DIE SET NEST INDENTOR	----	----	----	W33RT(4) W33VT(4)	W33VT(4)	----	U33RT(4)	U33RT(4)	U33RT(4)	----	L33RT(1)	PAT81KFT(4) Y81KFT(4) PAT4PC834(4) Y4PC834(4) PAT644(1) Y644(1)	2-5/16"
YA34 YA34N	BROWN	20 299	BROWN DIE SET NEST INDENTOR	----	----	----	W34RT(4) W34VT(4)	W34VT(4)	----	U34RT(4) U31ART(2)	U34RT(4) U31ART(2)	U34RT(4) U31ART(2)	C34R(2) C31AR(2)	L34RT(2)	PAT81KFT(4) Y81KFT(4) PAT4PC834(4) Y4PC834(4) PAT644(1) Y644(1)	2-5/16"

NOTES:

- MATERIAL : COPPER TUBING.
- FINISH: ELECTRO-TIN PLATED.
- CATALOG # PT6515 ADAPTOR IS REQUIRED TO USE "U" DIES IN Y45 SERIES TOOLS.
- CATALOG # PUADP-1 ADAPTOR IS REQUIRED TO USE "U" DIES IN Y46 SERIES TOOLS.
- Y35P3 INDENTOR ADAPTOR REQUIRED FOR Y34PR INDENTOR.
- PERMANENT DIE IN TOOLING.
- DIMENSIONS IN BRACKETS [] ARE IN MILLIMETERS ROUNDED OFF TO THE NEAREST MILLIMETER, UNLESS OTHERWISE NOTED, AND ARE FOR REFERENCE ONLY.
- FOR USE BY CUSTOMERS THAT HAVE THIS HYPRESS™ NO NEW Y34A HYPRESS™ TOOLS ARE BEING PROCESSED. Y34A USES A--D NEST DIES ONLY.
- CONNECTORS ARE UL LISTED; UNDRILLED VERSIONS ARE NOT UL LISTED.
- CONNECTORS ARE CSA CERTIFIED; UNDRILLED VERSIONS ARE NOT CSA CERTIFIED.
- FOR UNDRILLED VERSIONS ADD SUFFIX "U" TO END OF CATALOG NUMBER. FOR UNDRILLED VERSIONS, USE D MIN. = N MAX. + Z MIN.
- "X", "W-RT", "W-VT", "U", & "L" DIE SETS ARE COLOR CODED. "A", "B", AND "C" DIES ARE NOT COLOR CODED. NESTS AND INDENTOR TYPE ARE NOT COLOR CODED.



SUPERSEDES: SA794849 (SHT.6)
REFERENCE: SD17179 (YA-2, YA-4)
SE209241

TO ORDER BURNDY® PRODUCTS CALL		HYLUG™	
UNITED STATES 1-800-346-4175 (LONDONDERRY, NH)		ITEM NO: --	CAT. NO: YA-, YA-N, YA-TC-
CANADA: 1-800-361-6975 (QUEBEC) 1-800-387-6487 (ALL OTHER PROVINCES)		DRAWN BY: C.RACANO 6/16/77	CHECKER: CAR 6/16/77
FOR PRODUCT INFO: http://www.burndy.com		DSN APPVL: LB 6/24/77	MFG APPVL: N/A N/A
		QC APPVL: C.ACKERMAN 9/9/94	MKT APPVL: T.NELSON 9/7/94
		SCALE: NTS	PROJ #: --
		SIZE: D	DRAWING NO: SD079849
		REL LEVEL: Released	SHEET 6 OF 10

REV: PE0200