



INNOVATIVE POWER SOLUTIONS

# Generator Docking Stations

## GENERATOR DOCKING STATIONS



Power Assemblies has developed a high quality, low cost generator docking station with a CAM lock quick connection system. The generator docking station is used in conjunction with a transfer switch to provide a convenient, quick connect option for emergency power. These systems feature a NEMA 4/12 enclosure and are capable of handling a range of 400 Amps to 2000 Amps. Multiple system configurations allow for numerous wiring possibilities to fit customer and building requirements.

## Features and Benefits



400 to 2000 amp configurations to meet a wide variety of requirements



UL/cULus 1008 Listed



Industry standard series 16 color-coded CAMS for ease of use



NEMA 4/12 enclosure suitable for wind driven rain



Silver-plated copper bus bar for reduced resistance



ANSI-61 gray powder coated 14 gauge carbon steel



Lockable enclosure with concealed hinges for security



Drop down door provides security and safety when cables are not connected

## GDS ACCESSORIES



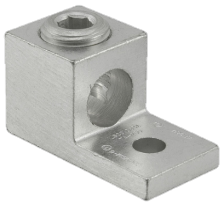
### COMPRESSION LUGS



GDS Model	Wire Size	Ilsco PN
400A 3P4W   400A 3P3W	600 MCM	CLNS-600-12
400A 3P4W   400A 3P3W	3/0 AWG	CLNS-3/0-13
800A-2000A 3P4W   800A-2000A 3P3W	600 MCM	CLND-600-12-134
800A-2000A 3P4W   800A-2000A 3P3W	350 MCM	CLND-350-12-134



### MECHANICAL LUGS



GDS Model	Wire Size	Ilsco PN
400A 3P4W   400A 3P3W	600 MCM	TA-600
400A 3P4W   400A 3P3W	3/0 AWG	TA-250
800A-2000A 3P4W   800A-2000A 3P3W	600 MCM	TA-600-2NS
800A-2000A 3P4W   800A-2000A 3P3W	350 MCM	TA-350-2NS



### KIRK KEY

Trapped key interlock system to safeguard personnel, equipment, and processes.

## GDS MINI SERIES

<b>Agency Approvals:</b>	cULus Listed	<b>Encl Type:</b>	NEMA 4/12
<b>MPN:</b>	GDS-OM****see chart	<b>Mount Details:</b>	Wall Mount
<b>Power Input:</b>	Series 16 CAMs	<b>Encl Mat:</b>	14 Ga. Carbon Steel
<b>Power Output</b>	Silver-Plated Copper Bus Bar	<b>Drawings:</b>	Available upon request
<b>Max Voltage:</b>	Up to 600 VAC	<b>Enclosure Dims:</b>	24h"x20w"x8d"
<b>Max Amp:</b>	400A		



PN	Amps	Volts	Phase/Wires	Color Code	Cams/Poles	NEMA
GDS-OM1A12	400	120/208V Y	3P4W	BRBWG	1	4/12
GDS-OM1B22	400	250V D	3P3W	BRBG	1	4/12
GDS-OM1C12	400	277-480V Y	3P4W	BOYWG	1	4/12
GDS-OM1D22	400	480V D	3P3W	BOYG	1	4/12

#### Color Codes:

Black-E	Blue-B	Green-G	Yellow-Y
Red-R	White-W	Brown-H	Orange-O

### KEY FEATURES & BENEFITS

- Compact size, suitable for space constrained areas
- cULus Listed – UL1008
- NEMA 4/12 watertight enclosure
- Series 16 CAM inputs
- Lockable

# GDS COMPACT SERIES



## KEY FEATURES & BENEFITS



400, 800, & 1200 amp configurations



Wall mount enclosure



cULus Listed – UL1008



NEMA 4/12 watertight enclosure



Series 16 CAM inputs



Lockable

<b>Agency Approvals:</b>	cULus Listed	<b>Encl Type:</b>	NEMA 4/12
<b>MPN:</b>	GDS-OU****see chart	<b>Mount Details:</b>	Wall Mount
<b>Power Input:</b>	Series 16 CAMs	<b>Encl Mat:</b>	14 Ga. Carbon Steel
<b>Power Output</b>	Silver-Plated Copper Bus Bar	<b>Drawings:</b>	Available upon request
<b>Max Voltage:</b>	Up to 600 VAC	<b>Enclosure Dims:</b>	36h"x30w"x12d"
<b>Max Amp:</b>	400A, 800A, 1200A		

### 400A COMPACT GDS CONFIGURATIONS:

PN	Amps	Volts	Phase/Wires	Color Code	Cams/Poles	NEMA
GDS-OU1A12	400	120/208V Y	3P4W	ERBWG	2	4/12
GDS-OU1B22	400	250V D	3P3W	ERBG	2	4/12
GDS-OU1C12	400	277-480V Y	3P4W	HOYWG	2	4/12
GDS-OU1D22	400	480V D	3P3W	HOYG	2	4/12

### 800A COMPACT GDS CONFIGURATIONS:

PN	Amps	Volts	Phase/Wires	Color Code	Cams/Poles	NEMA
GDS-OU2A12	800	120/208V Y	3P4W	ERBWG	1	4/12
GDS-OU2B22	800	250V D	3P3W	ERBG	1	4/12
GDS-OU2C12	800	277-480V Y	3P4W	HOYWG	1	4/12
GDS-OU2D22	800	480V D	3P3W	HOYG	1	4/12

### 1200A COMPACT GDS CONFIGURATIONS:

PN	Amps	Volts	Phase/Wires	Color Code	Cams/Poles	NEMA
GDS-OU3A12	1200	120/208V Y	3P4W	ERBWG	3	4/12
GDS-OU3B22	1200	250V D	3P3W	ERBG	3	4/12
GDS-OU3C12	1200	277-480V Y	3P4W	HOYWG	3	4/12
GDS-OU3D22	1200	480V D	3P3W	HOYG	3	4/12

#### Color Codes:

Black-E	Blue-B	Green-G	Yellow-Y
Red-R	White-W	Brown-H	Orange-O

# GDS STANDARD SERIES



## KEY FEATURES & BENEFITS



1200, 1600, & 2000 amp configurations



Wall mount enclosure



NEMA 4/12 watertight enclosure



Series 16 CAM inputs



Lockable

<b>Agency Approvals:</b>	cULus Listed	<b>Encl Type:</b>	NEMA 4/12
<b>MPN:</b>	GDS-SB****see chart	<b>Mount Details:</b>	Wall Mount
<b>Power Input:</b>	Series 16 CAMs	<b>Encl Mat:</b>	14 Ga. Carbon Steel
<b>Power Output</b>	Silver-Plated Copper Bus Bar	<b>Drawings:</b>	Available upon request
<b>Max Voltage:</b>	Up to 600 VAC	<b>Enclosure Dims:</b>	48h"x48w"x16d"
<b>Max Amp:</b>	2000A Series		

### 1200A STANDARD GDS CONFIGURATIONS:

PN	Amps	Volts	Phase/Wires	Color Code	Cams/Poles	NEMA
GDS-SB3A12	1200	120/208V Y	3P4W	ERBWG	3	4/12
GDS-SB3B22	1200	250V D	3P3W	ERBG	3	4/12
GDS-SB3C12	1200	277-480V Y	3P4W	HOYWG	3	4/12
GDS-SB3D22	1200	480V D	3P3W	HOYG	3	4/12

### 1600A STANDARD GDS CONFIGURATIONS:

PN	Amps	Volts	Phase/Wires	Color Code	Cams/Poles	NEMA
GDS-SB4A12	1600	120/208V Y	3P4W	ERBWG	4	4/12
GDS-SB4B22	1600	250V D	3P3W	ERBG	4	4/12
GDS-SB4C12	1600	277-480V Y	3P4W	HOYWG	4	4/12
GDS-SB4D22	1600	480V D	3P3W	HOYG	4	4/12

### 2000A STANDARD GDS CONFIGURATIONS:

PN	Amps	Volts	Phase/Wires	Color Code	Cams/Poles	NEMA
GDS-SB5A12	2000	120/208V Y	3P4W	ERBWG	5	4/12
GDS-SB5B22	2000	250V D	3P3W	ERBG	5	4/12
GDS-SB5C12	2000	277-480V Y	3P4W	HOYWG	5	4/12
GDS-SB5D22	2000	480V D	3P3W	HOYG	5	4/12

**Color Codes:** Black-E      Blue-B      Green-G      Yellow-Y  
 Red-R      White-W      Brown-H      Orange-O



POWER ASSEMBLIES  
 (702)-364-6264  
 6980 W. Warm Springs Rd.  
 Suite 160  
 Las Vegas, NV 89113



WWW.POWERASSEMBLIES.COM