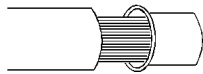


advanced devices bates®

CATALOG NUMBER: 20F 20A/125V Female Inline

CONNECTOR

- USE WITH 16/3 TYPE SJO, .34" NOM. THROUGH 12/3 TYPE SO, .62" NOM.
- REMOVE OUTER JACKET 1-3/8".
- STRIP CONDUCTORS 1/2" (DO NOT TIN).
- PLACE WIRE SHOE OVER LOOSE WIRE STRANDS OF EACH CONDUCTOR.



INSERT INTO BARREL OF TERMINAL (GREEN WIRE IN MIDDLE CONTACT) AND TORQUE SCREWS TO 12 IN-LBS.

- ATTACH COVER AND SECURE WITH MOUNTING SCREWS - 12 IN-LBS TORQUE.

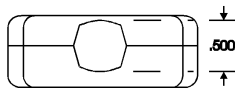
CORD CLAMP INSTRUCTIONS

CORD HOLDING SYSTEM HAS SIX (6) DIFFERENT COMBINATIONS OFFERING OPENINGS FROM .500" TO .060". TYPICAL USES ARE DEPICTED BELOW.

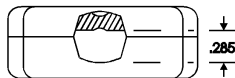
TYPICAL CORD USE

REAR VIEW

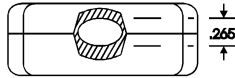
12/3 SO
NO INSERTS



12/3 SJOW:
ONE INSERT,
MIN. CLEARANCE



14/3 SO, SJO OR 14/3 SF2
WITH GLASS SLEEVE,
TWO INSERTS,
MAX. CLEARANCE



UL581
532

Marinco
Industrial Group



www.actuant.com/electrical

Actuant Electrical, N85W12545 Westbrook Crossing, Menomonee Falls, WI 53051